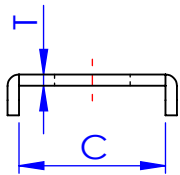
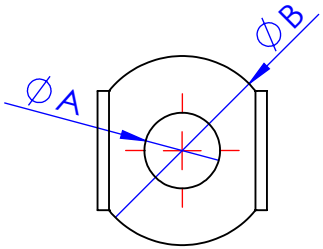
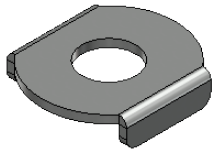


# FLANGED WASHERS



Part No.	Description	A	B	C	T
GH-FW-080/GH-FW-080-SS	For 4mm & #8 spindles	4.3	12.7	8.3	1
GH-FW-100/GH-FW-100-SS	For 5mm & #10 spindles	5	12.6	9.3	1.2
GH-FW-140/GH-FW-140-SS	For 6mm & 1/4" spindles	6.3	14	12	1.5
GH-FW-142/GH-FW-142-SS	For 6mm & 1/4" spindles	6.3	15	13.5	1.5
GH-FW-516/GH-FW-516-SS	For 8mm & 5/16" spindles	8.3	22	15.6	2
GH-FW-380/GH-FW-380-SS	For 10mm & 3/8" spindles	10	25	19.4	2
GH-FW-120	For 12mm & 1/2" spindles	13	33	24	3
GH-FW-580	For 16mm & 5/8" spindles	16.2	35	27.4	3

**GH-FW-SS : STAINLESS STEEL FLANGED WASHERS**

Unit:mm



**Good Hand Enterprise Co., Ltd**

TITLE:

DWG NO.

GH-FW series

A4