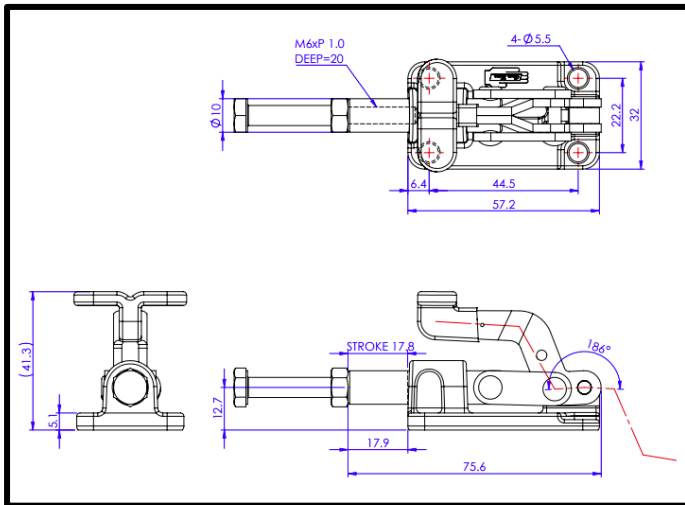
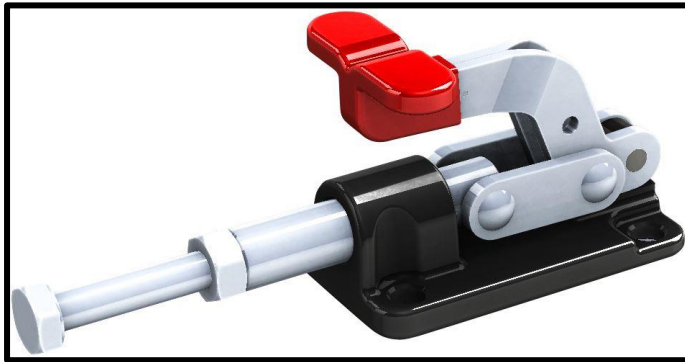


# Push-Pull Toggle Clamp

Part No. GH-36015M

**GH GoodHand UK**



## Product Description

Push Pull Toggle Clamp Plunger  
Stroke 17.8mm Size 250Kg

## Key Features

Overall Height: 41.3mm  
Length: 75.6mm  
Stroke: 17.8mm  
Holding Force: 250Kg

## Other Features

Arm Opens: 186°  
Weight: 0.17Kg

## Material

Clamp: Zinc Plated Mild Steel  
Spindle: Zinc Plated Mild Steel  
Handle: uPVC

## What's In The Bag?

GH-36015M: Toggle Clamp  
SA-065010: M6x50mm Zinc Plated Steel Spindle  
With Nut

**GH GoodHand UK**

[goodhanduk.co.uk](http://goodhanduk.co.uk)

01908 221 151