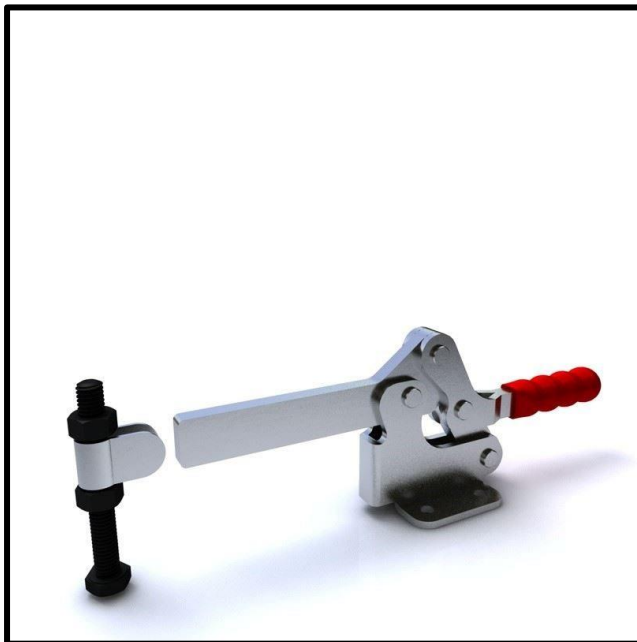


Horizontal Toggle Clamp
Part No. GH-24502-B



Product Description

Horizontal Toggle Clamp Flat
Base Slotted Arm Size 450daN

Key Features

Overall Height: 110.4mm
Underarm Height: 59mm
Arm Length: 109.2mm
Holding Force: 450daN

Other Features

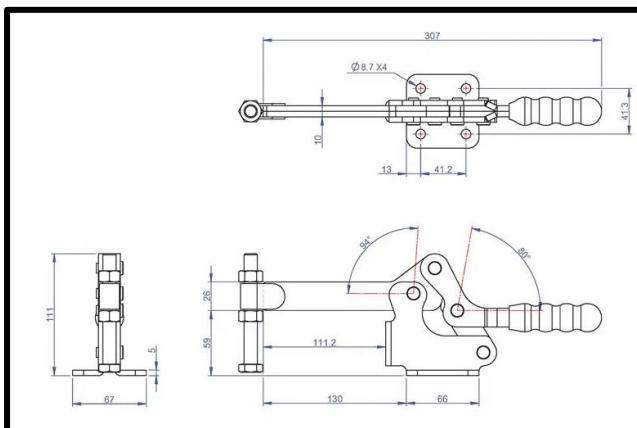
Arm Opens: 94°
Handle Opens: 80°
Weight: 1.445Kg

Material

Toggle Clamp: Zinc Plated Mild Steel
Spindle: Zinc Plated Mild Steel
Handle: uPVC

Whats In The Bag?

Toggle Clamp: GH-24502-B
Spindle: SA-121017
2x Flanged Washers: FW-120



goodhanduk.co.uk

01908 221 151