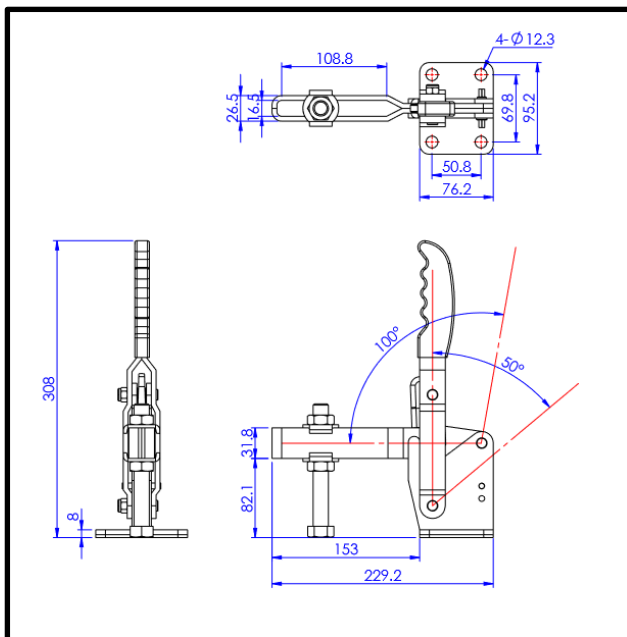
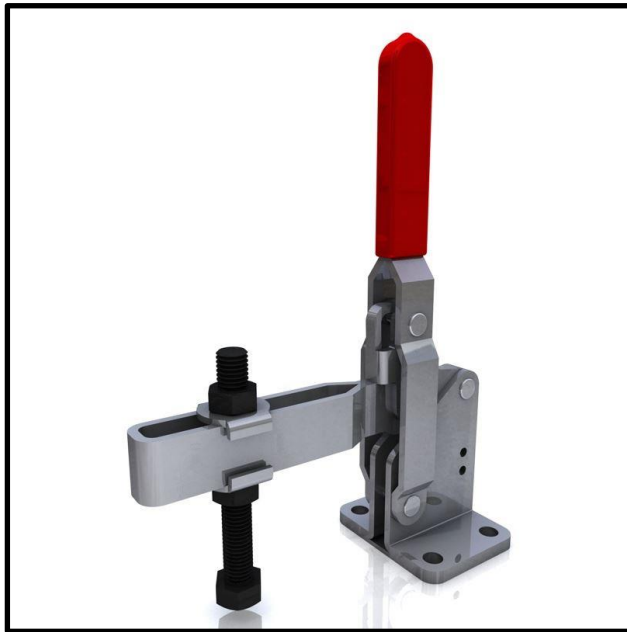


Vertical Toggle Clamp

Part No. GH-101-J



Product Description

Vertical Toggle Clamp Flat Base
Slotted Arm Size 550Kg

Key Features

Overall Height: 308mm
Underarm Height: 82.1mm
Arm Length: 153mm
Holding Force: 550Kg

Other Features

Arm Opens: 100°
Handle Opens: 50°
Weight: 2.54Kg

Material

Clamp: Zinc Plated Mild Steel
Spindle: Zinc Plated Mild Steel
Handle: uPVC

What's In The Bag?

GH-101-J: Toggle Clamp
2x FW-580: Flanged Washers For 16mm Spindle
SA-161520: M16x150mm Zinc Plated Steel
Spindle With Nuts



goodhanduk.co.uk

01908 221 151