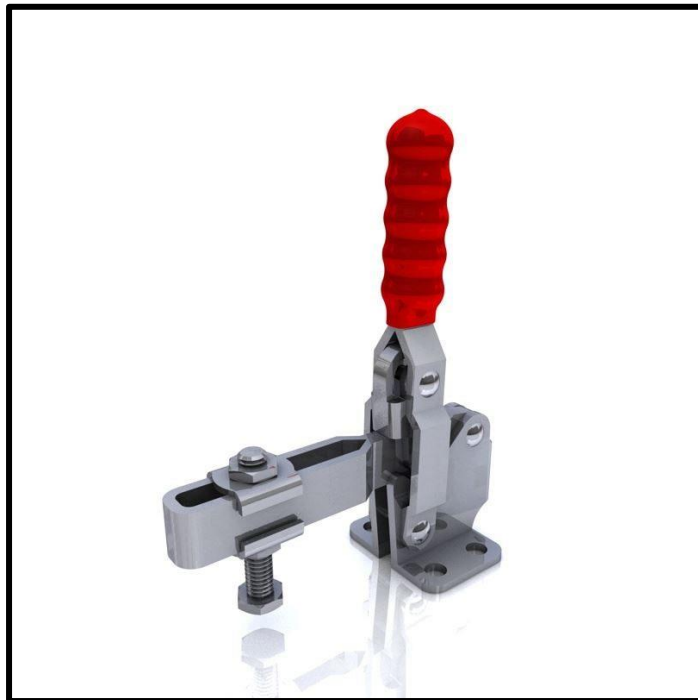


Vertical Toggle Clamp

Part No. GH-12130-SS



Product Description

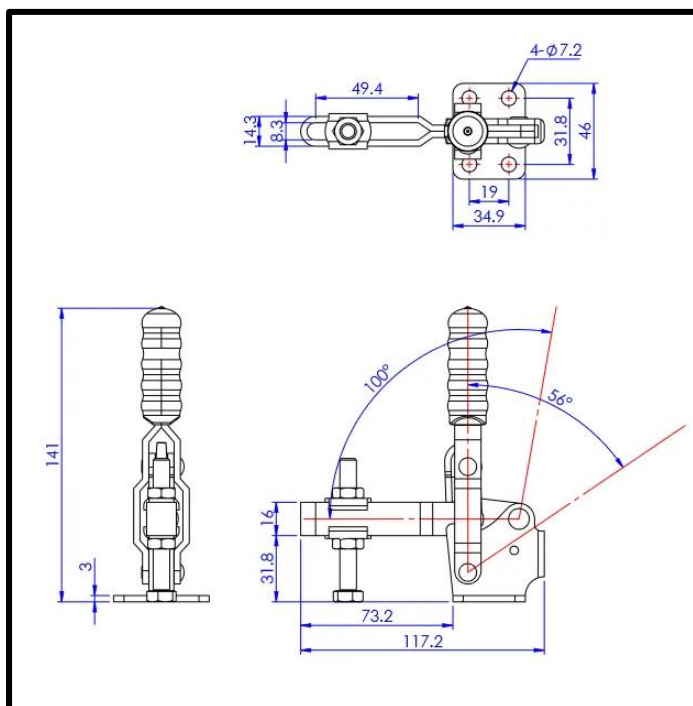
Stainless Steel Vertical Toggle Clamp Flat Base Size 227daN

Key Features

Overall Height: 141mm
Underarm Height: 31.8mm
Arm Length: 73.2mm
Holding Force: 227daN

Other Features

Arm Opens: 100°
Handle Opens: 56°
Weight: 0.355Kg



Material

Toggle Clamp: 304 Stainless Steel
Spindle: 304 Stainless Steel
Handle: uPVC

What's In The Bag?

GH-12130-SS: Toggle Clamp
FW-516-SS: 2x Flanged Washers for M8 Spindle
SA-085012-SS: M8x50mm Stainless Spindle With Nuts



goodhanduk.co.uk

01908 221 151