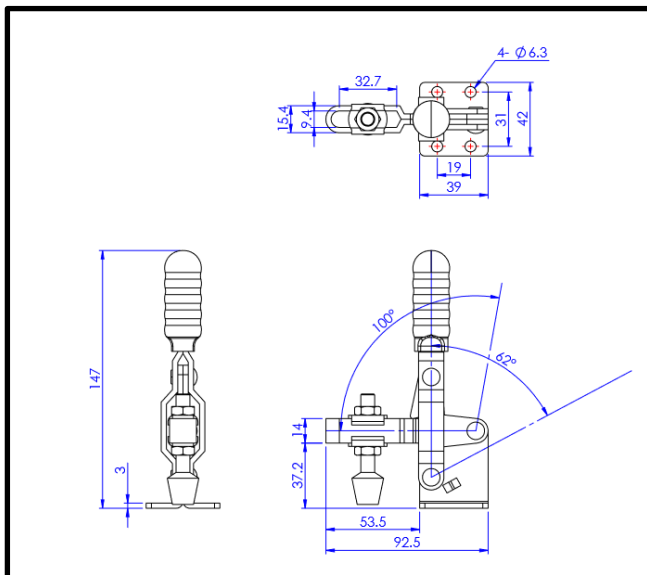
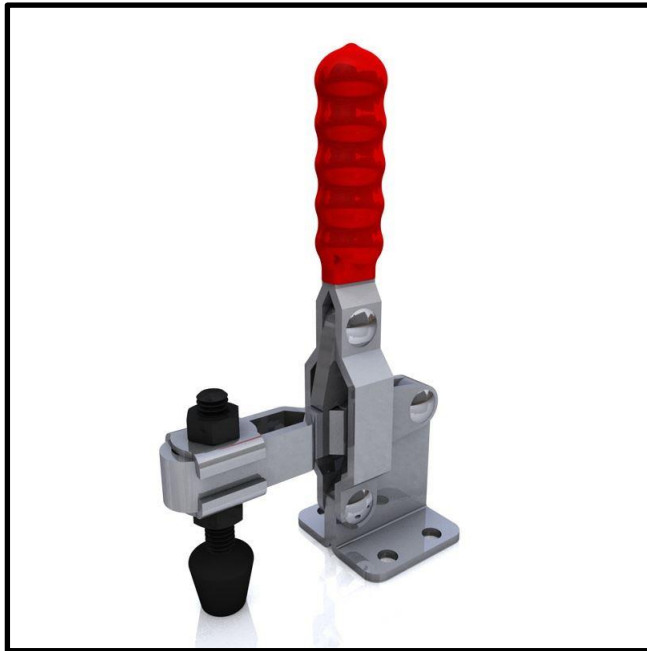


# Vertical Toggle Clamp

Part No. GH-101-D



## Product Description

Vertical Toggle Clamp Flat Base  
Slotted Arm Size 180Kg

## Key Features

Overall Height: 147mm  
Underarm Height: 37.2mm  
Arm Length: 53.5mm  
Holding Force: 180Kg

## Other Features

Arm Opens: 100°  
Handle Opens: 62°  
Weight: 0.33Kg

## Material

Clamp: Zinc Plated Mild Steel  
Spindle: Neoprene Tipped Steel  
Handle: uPVC

## What's In The Bag?

GH-101-D: Toggle Clamp  
2x FW-516: Flanged Washers For 8mm Spindle  
FC-086312: M8x63mm Neoprene Tipped Spindle  
With Nuts



[goodhanduk.co.uk](http://goodhanduk.co.uk)

01908 221 151