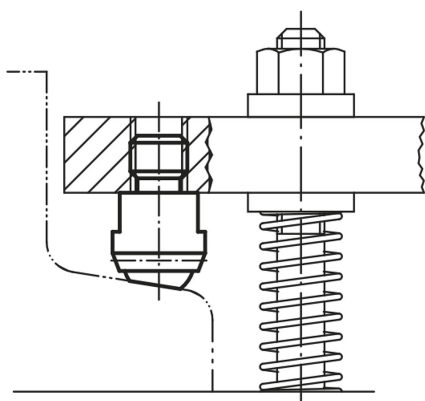


Self-aligning pads

Item description/product images



Description

Material:

Body carbon steel.

Ball, ball bearing steel 1.2067.

Form D: Ball with POM insert.

Form H: Ball with POM insert.

Form K: Ball with carbide insert.

Form M has a carbide ball.

Version:

Body tempered and phosphated.

Ball hardened.

Form M ball nickel plated.

Note:

Self-aligning pads serve as stops, supports and thrust pads in fixture constructions.

Ball secured against rotation.

* Valid only if the minimum bore depth is observed.

Drawing reference:

Form C: with male thread, flattened ball, smooth.

Form D: with male thread, flattened ball, with POM insert.

Form F: with male thread, flattened ball, diamond grip.

Form M: with male thread, flattened ball, with carbide insert.

Form G: press fit, flattened ball, smooth.

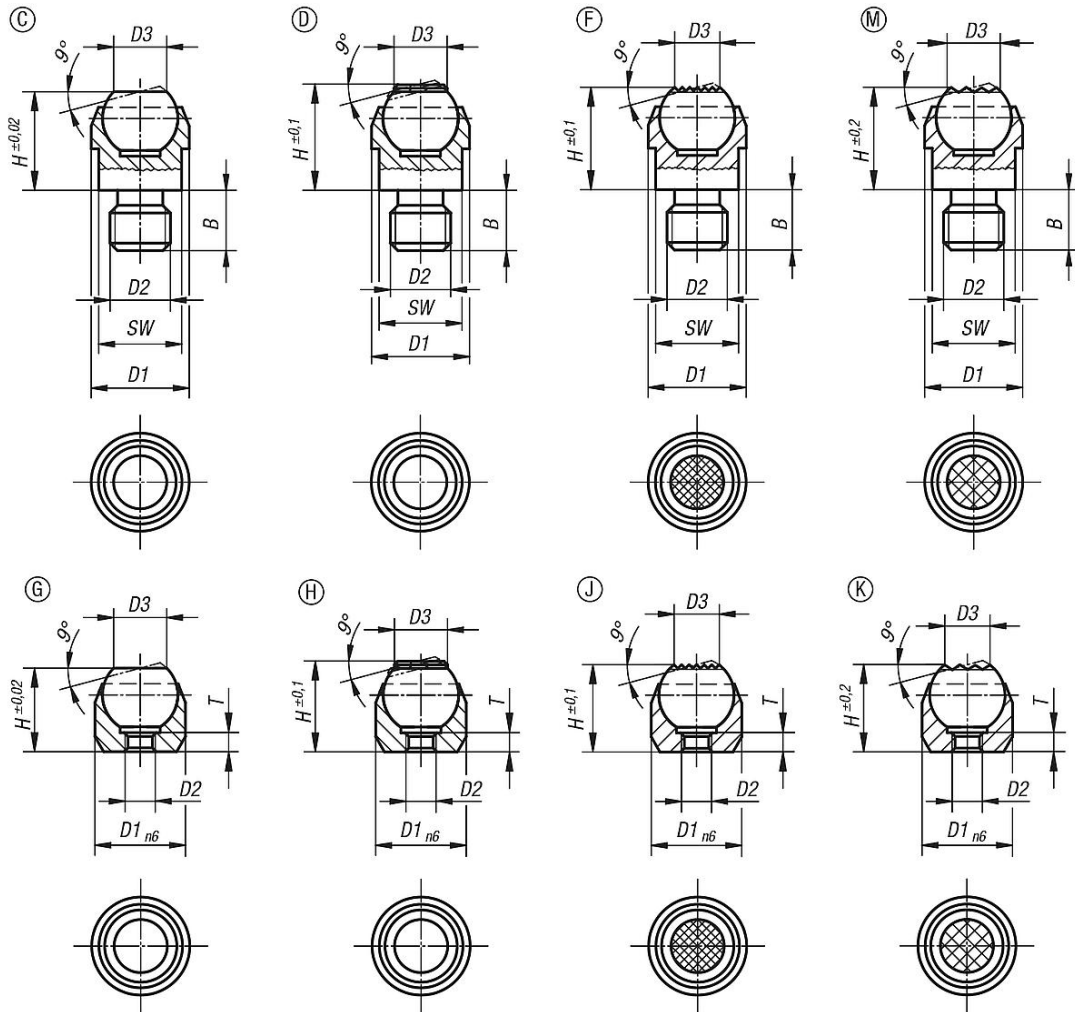
Form H: press fit, flattened ball, with POM insert.

Form J: press fit, flattened ball, diamond grip.

Form K: press fit, flattened ball, with carbide insert.

Self-aligning pads

Drawings



Overview of items

Form C, with male thread, flattened ball, plain

| Order No. | Form | B | D1 | D2 | D3 | H | Ball-Ø | SW | Load rating max. kN (static load only) |
|-----------|------|----|----|-----|------|----|--------|----|--|
| K0282.108 | C | 8 | 13 | M8 | 7,2 | 13 | 10 | 11 | 10 |
| K0282.110 | C | 10 | 20 | M10 | 10,5 | 18 | 16 | 17 | 25 |
| K0282.112 | C | 12 | 20 | M12 | 10,5 | 18 | 16 | 17 | 25 |
| K0282.116 | C | 16 | 30 | M16 | 20 | 27 | 25 | 27 | 90 |
| K0282.120 | C | 20 | 50 | M20 | 34,5 | 35 | 40 | 41 | 165 |

Form D, with male thread, flattened ball, with POM insert

| Order No. | Form | B | D1 | D2 | D3 | H | Ball-Ø | SW | Load rating max. kN (static load only) |
|-----------|------|----|----|-----|------|----|--------|----|--|
| K0282.208 | D | 8 | 13 | M8 | 7,9 | 13 | 10 | 11 | 10 |
| K0282.210 | D | 10 | 20 | M10 | 12,7 | 18 | 16 | 17 | 25 |
| K0282.212 | D | 12 | 20 | M12 | 12,7 | 18 | 16 | 17 | 25 |

Form F, male thread, flattened ball, diamond grip

Self-aligning pads

Overview of items

| Order No. | Form | B | D1 | D2 | D3 | H | Ball-Ø | SW | Load rating max. kN (static load only) |
|-----------|------|----|----|-----|------|----|--------|----|--|
| K0282.308 | F | 8 | 13 | M8 | 7,2 | 13 | 10 | 11 | 10 |
| K0282.310 | F | 10 | 20 | M10 | 10,5 | 18 | 16 | 17 | 25 |
| K0282.312 | F | 12 | 20 | M12 | 10,5 | 18 | 16 | 17 | 25 |
| K0282.316 | F | 16 | 30 | M16 | 20 | 27 | 25 | 27 | 90 |
| K0282.320 | F | 20 | 50 | M20 | 34,5 | 35 | 40 | 41 | 165 |

Form M, male thread, flattened ball, with carbide insert

| Order No. | Form | B | D1 | D2 | D3 | H | Ball-Ø | SW | Load rating max. kN (static load only) |
|-----------|------|----|----|-----|-----|------|--------|----|--|
| K0282.908 | M | 8 | 13 | M8 | 7,7 | 13,3 | 10 | 11 | 10 |
| K0282.910 | M | 10 | 20 | M10 | 12 | 18 | 16 | 17 | 25 |
| K0282.912 | M | 12 | 20 | M12 | 12 | 18 | 16 | 17 | 25 |

Form G, press fit, flattened ball, flat face

| Order No. | Form | D1 | D2 | D3 | H | T | Ball-Ø | Receiving hole | Load rating max. kN (static load only) |
|-----------|------|----|----|------|----|-----|--------|-------------------|--|
| K0282.403 | G | 12 | M3 | 7,2 | 11 | 3,5 | 10 | Ø 12 H7X6 min. | 10* |
| K0282.404 | G | 18 | M4 | 10,5 | 17 | 4,4 | 16 | Ø 18 H7X8 min. | 25* |
| K0282.405 | G | 28 | M5 | 20 | 25 | 6,3 | 25 | Ø 28 H7X13 min. | 90* |

Form H, press fit, flattened ball, with POM insert

| Order No. | Form | D1 | D2 | D3 | H | T | Ball-Ø | Receiving hole | Load rating max. kN (static load only) |
|-----------|------|----|----|-------|----|---|--------|-------------------|--|
| K0282.503 | H | 12 | M3 | 7,9 | 11 | 3 | 10 | Ø 12 H7X6 min. | 10* |
| K0282.504 | H | 18 | M4 | 12,7 | 17 | 4 | 16 | Ø 18 H7X8 min. | 25* |
| K0282.505 | H | 28 | M5 | 19,05 | 25 | 6 | 25 | Ø 28 H7X13 min. | 90* |

Form J, press fit, flattened ball, diamond grip

| Order No. | Form | D1 | D2 | D3 | H | T | Ball-Ø | Receiving hole | Load rating max. kN (static load only) |
|-----------|------|----|----|------|----|-----|--------|-------------------|--|
| K0282.603 | J | 12 | M3 | 7,2 | 11 | 3,5 | 10 | Ø 12 H7X6 min. | 10* |
| K0282.604 | J | 18 | M4 | 10,5 | 17 | 4,4 | 16 | Ø 18 H7X8 min. | 25* |
| K0282.605 | J | 28 | M5 | 20 | 25 | 6,3 | 25 | Ø 28 H7X13 min. | 90* |

Form K, press fit, flattened ball, with carbide insert

| Order No. | Form | D1 | D2 | D3 | H | T | Ball-Ø | Receiving hole | Load rating max. kN (static load only) |
|-----------|------|----|----|-------|----|---|--------|-------------------|--|
| K0282.803 | K | 12 | M3 | 7,9 | 11 | 3 | 10 | Ø 12 H7X6 min. | 10* |
| K0282.804 | K | 18 | M4 | 12,7 | 17 | 4 | 16 | Ø 18 H7X8 min. | 25* |
| K0282.805 | K | 28 | M5 | 19,05 | 25 | 6 | 25 | Ø 28 H7X13 min. | 90* |