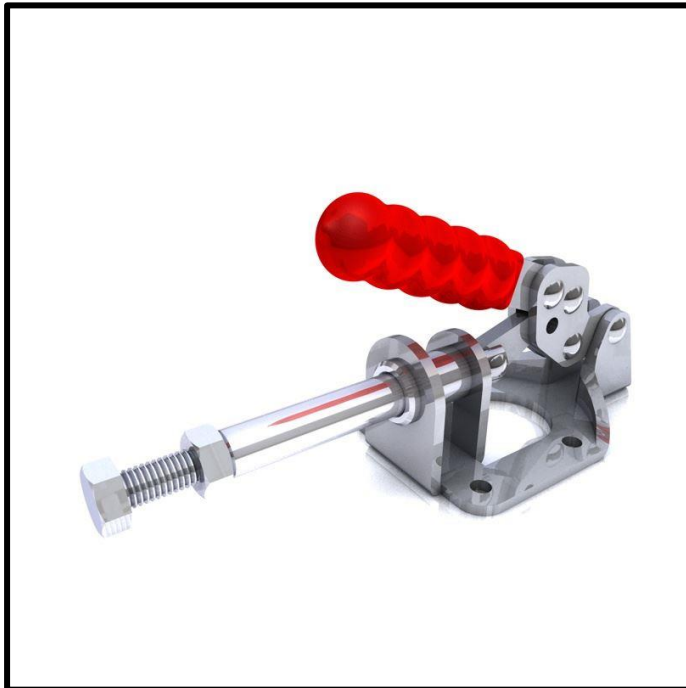


# Push-Pull Toggle Clamp

## Part No. GH-302-FMSS



### Product Description

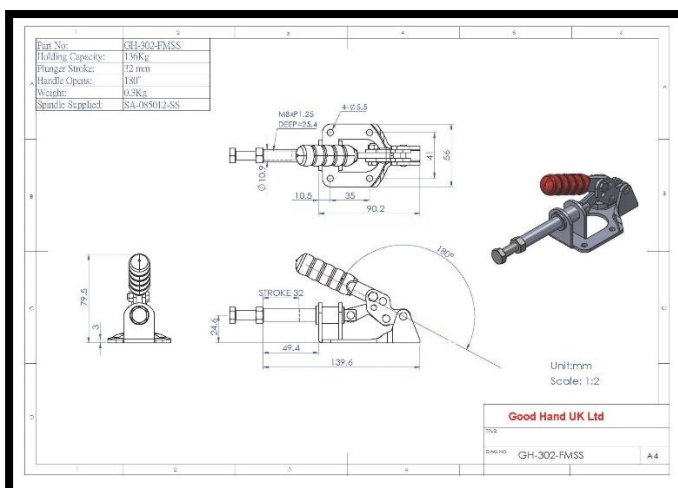
Stainless Steel Push Pull Clamp Stroke 32mm Size 136daN

### Key Features

Overall Height: 79.5mm  
Length: 139.6mm  
Stroke: 32mm  
Holding Force: 136Kg

### Other Features

Arm Opens: 180°  
Weight: 0.30Kg



### Material

Clamp: Stainless Steel  
Spindle: Stainless Steel  
Handle: uPVC

### What's In The Bag?

GH-302-FMSS: Toggle Clamp  
SA-085012-SS: M8x50 Stainless Steel Spindle With Nuts



[goodhanduk.co.uk](http://goodhanduk.co.uk)

01908 221 151