

# Horizontal Toggle Clamp

Part No. GH-201-BSI



## Product Description

Horizontal Toggle Clamp Straight  
Base Solid Arm Size 90daN

## Key Features

Overall Height:	50.7mm
Underarm Height:	38.2mm
Arm Length:	55.2mm
Holding Force:	90daN

## Other Features

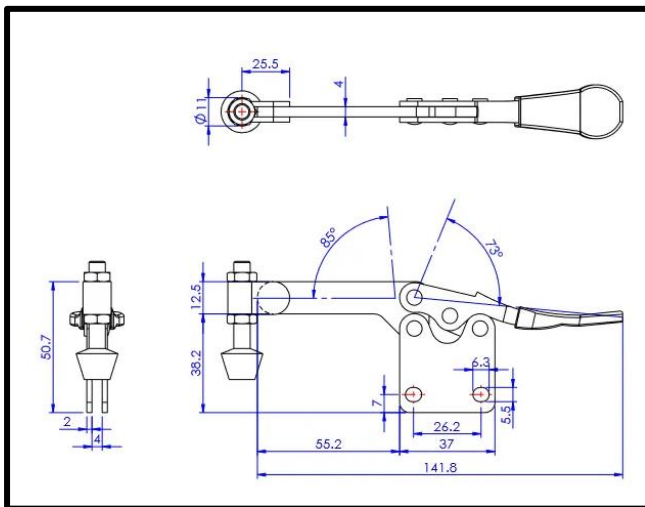
Arm Opens:	85°
Handle Opens:	73°
Weight:	0.13Kg

## Material

Toggle Clamp:	Zinc Plated Mild Steel
Spindle:	Neoprene Tipped Zinc Plated Mild Steel
Handle:	uPVC
Bolt Retainer:	Zinc Plated Mild Steel

## Whats In The Bag?

Toggle Clamp:	GH-201-BSI
Spindle:	FC-064410
Bolt Retainer:	BR-140



[goodhanduk.co.uk](http://goodhanduk.co.uk)

01908 221 151