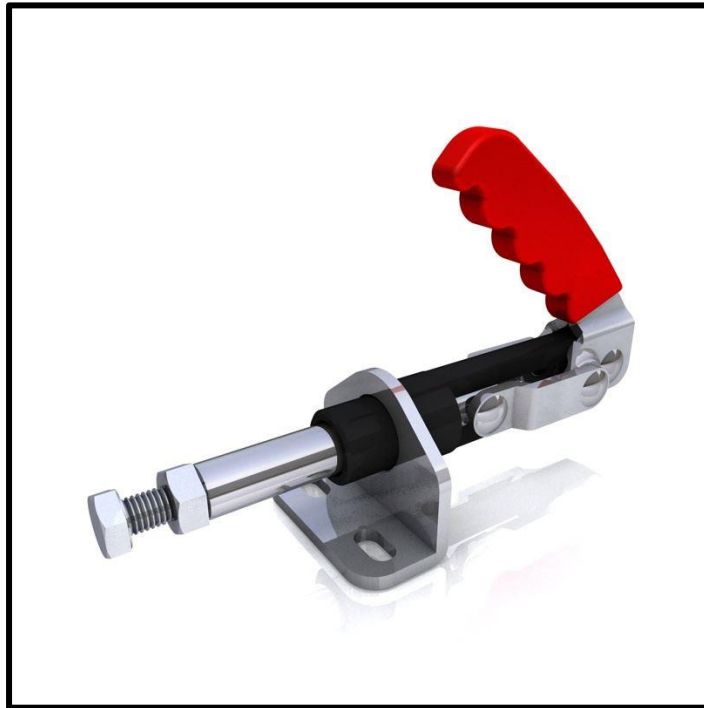


Push-Pull Toggle Clamp

Part No. GH-30450M



Product Description

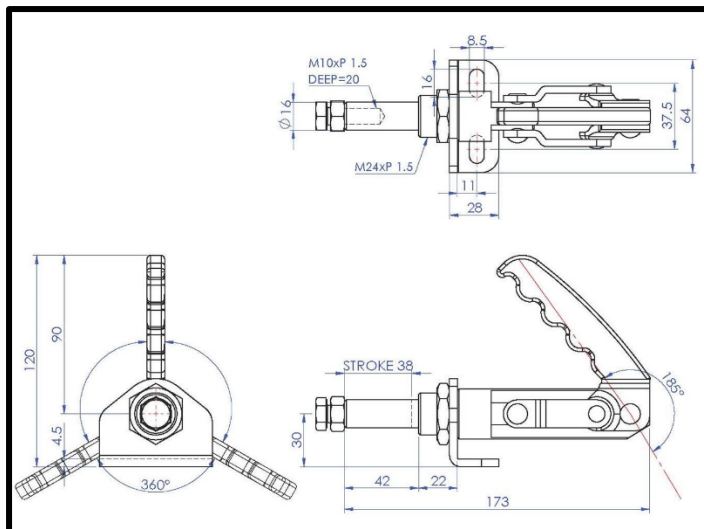
Push Pull Toggle Clamp Plunger
Stroke 38mm Size 450Kg

Key Features

Overall Height: 120mm
Length: 173mm
Stroke: 38mm
Holding Force: 450kg

Other Features

Arm Opens: 185°
Weight: 0.763Kg



Material

Clamp: Zinc Plated Mild Steel
Spindle: Zinc Plated Mild Steel
Handle: uPVC

What's In The Bag?

GH-30450M: Toggle Clamp
SA-103015: M10x30mm Zinc Plated Steel Spindle
With Nut



goodhanduk.co.uk

01908 221 151