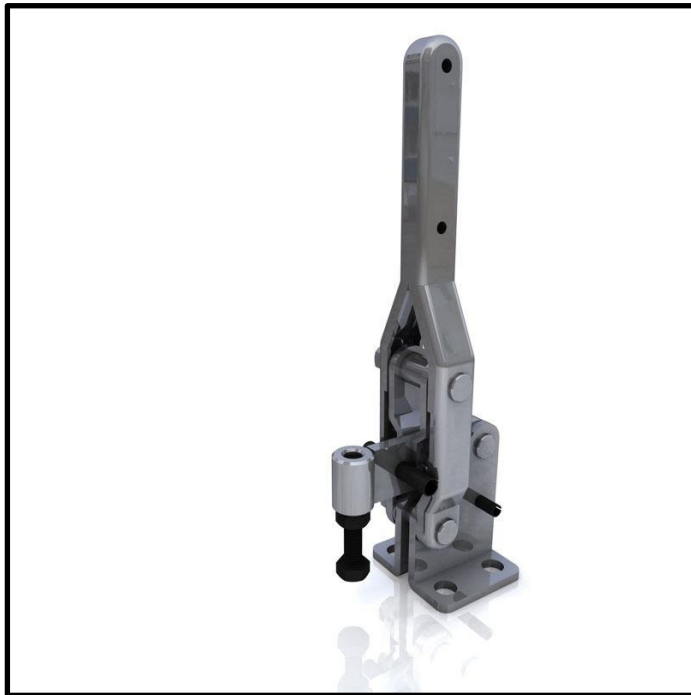


Vertical Toggle Clamp

Part No. GH-10448



Product Description

Vertical Toggle Clamp Flat Base
Fixed Arm Size 400Kg

Key Features

Overall Height: 238mm
Underarm Height: 50mm
Arm Length: 29mm
Holding Force: 400Kg

Other Features

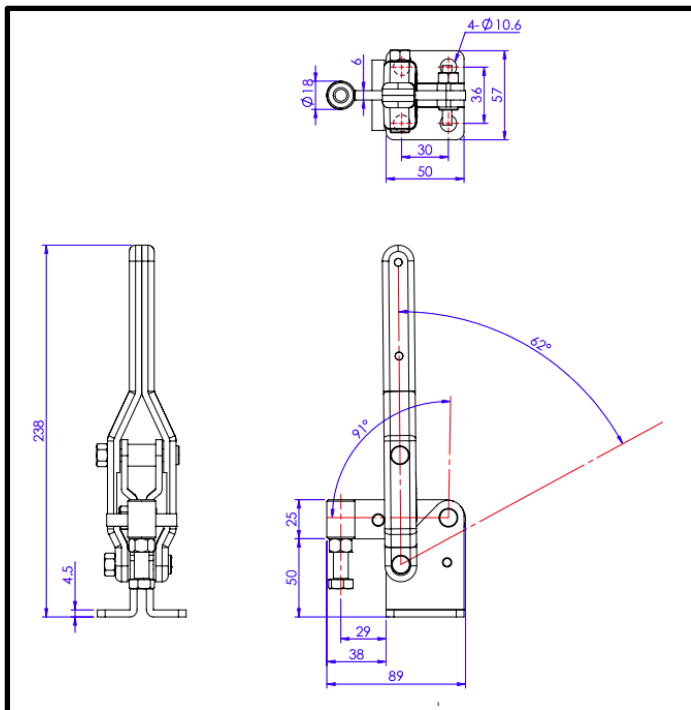
Arm Opens: 91°
Handle Opens: 62°
Weight: 0.87Kg

Material

Clamp: Zinc Plated Mild Steel
Spindle: Zinc Plated Mild Steel

What's In The Bag?

GH-10448: Toggle Clamp
SA-105015: M10x50mm Zinc Plated Steel Spindle
With Nuts



goodhanduk.co.uk

01908 221 151

Vertical Toggle Clamp

Part No. GH-10448



goodhanduk.co.uk

01908 221 151