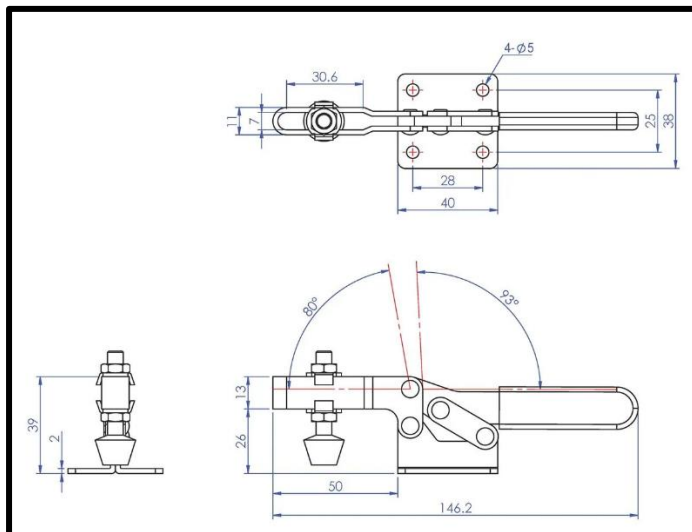
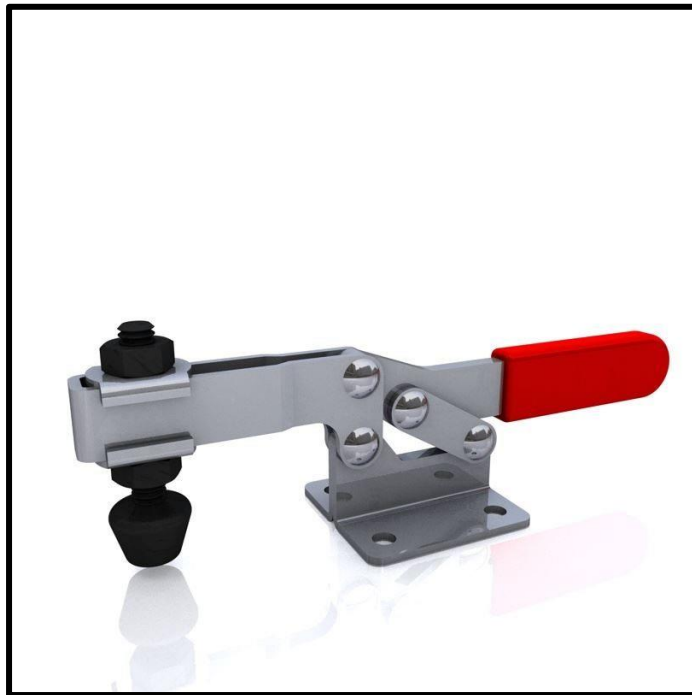


Horizontal Toggle Clamp

Part No. GH-201-C



Product Description

Horizontal Toggle Clamp Flat Base
Slotted Arm Size 100daN

Key Features

Overall Height:	39mm
Underarm Height:	26mm
Arm Length:	50mm
Holding Force:	100daN

Other Features

Arm Opens	80°
Handle Opens	93°
Weight:	0.14Kg

Material

Toggle Clamp:	Zinc Plated Mild Steel
Spindle:	Neoprene Tipped Zinc Plated Mild Steel
Handle:	uPVC
Flanged Washers:	Zinc Plated Mild Steel

What's In The Bag?

Toggle Clamp:	GH-201-C
Spindle:	FC-064410
Flanged Washers	2x FW-140



goodhanduk.co.uk

01908 221 151

Horizontal Toggle Clamp

Part No. GH-201-C



goodhanduk.co.uk

01908 221 151