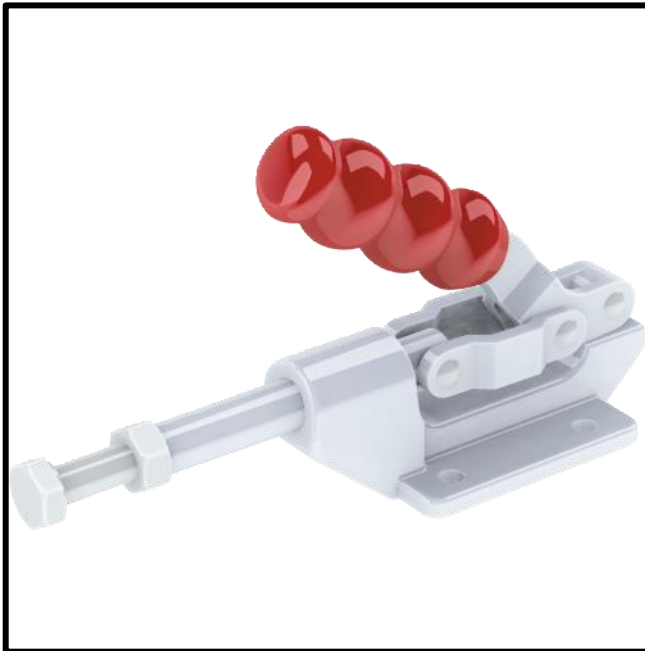


Push Pull Toggle Clamp

Part No. GH-36003-MSS



Product Description

Stainless Steel Push Pull Clamp
Stroke 32mm Size 272daN

Key Features

Overall Height:	85mm
Length:	125mm
Stroke	31.8mm
Holding Force:	272daN

Other Features

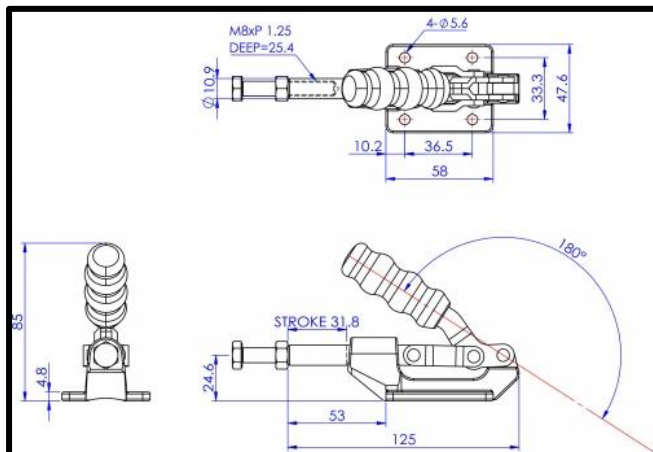
Arm Opens:	180°
Weight:	0.42Kg

Material

Toggle Clamp:	304 Stainless Steel
Handle:	uPVC
Spindle:	304 Stainless Steel

Whats In The Bag?

Toggle Clamp:	GH-225-DSS
Spindle:	SA-085012-SS



goodhanduk.co.uk

01908 221 151