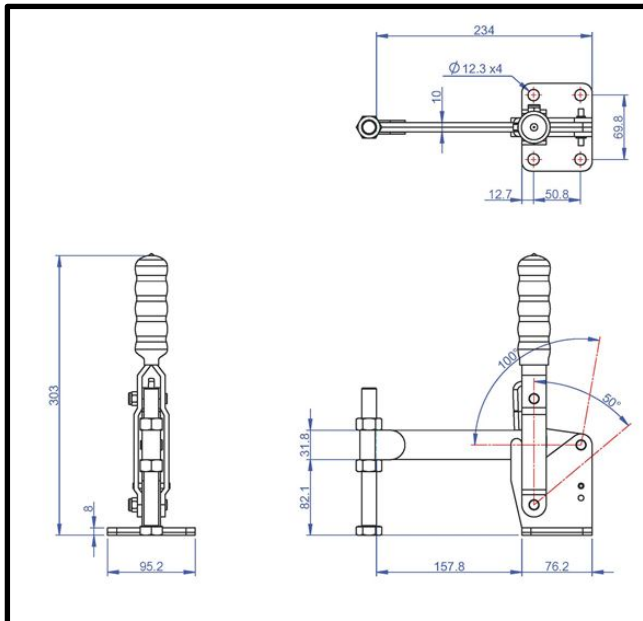
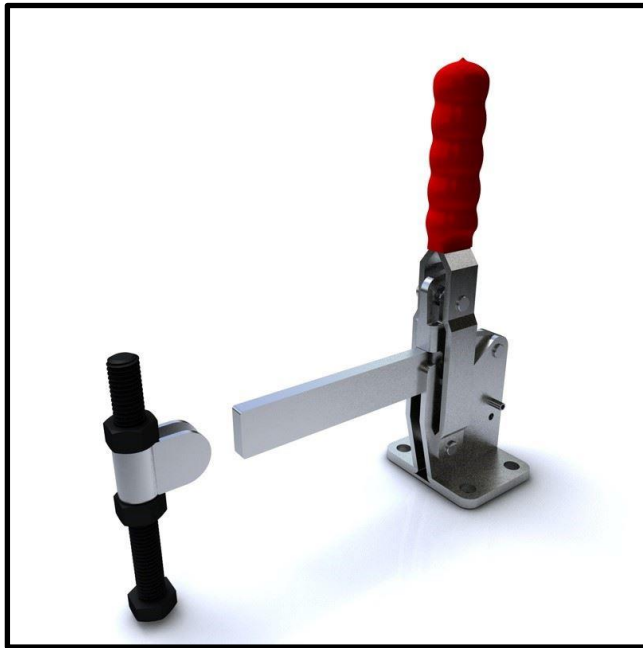


Vertical Toggle Clamp

Part No. GH-15502-A



Product Description

Vertical Toggle Clamp Flat Base
Solid Arm Size 550Kg

Key Features

Overall Height: 303mm
Underarm Height: 82.1mm
Arm Length: 157.8mm
Holding Force: 550Kg

Other Features

Arm Opens: 100°
Handle Opens: 50°
Weight: 2.7Kg

Material

Clamp: Zinc Plated Mild Steel
Spindle: Zinc Plated Mild Steel
Handle: uPVC

What's In The Bag?

GH-15502-A: Toggle Clamp
SA-161520: M16x150mm Zinc Plated Steel
Spindle With Nuts
BR-580: Bolt Retainer For M16 Spindle



goodhanduk.co.uk

01908 221 151