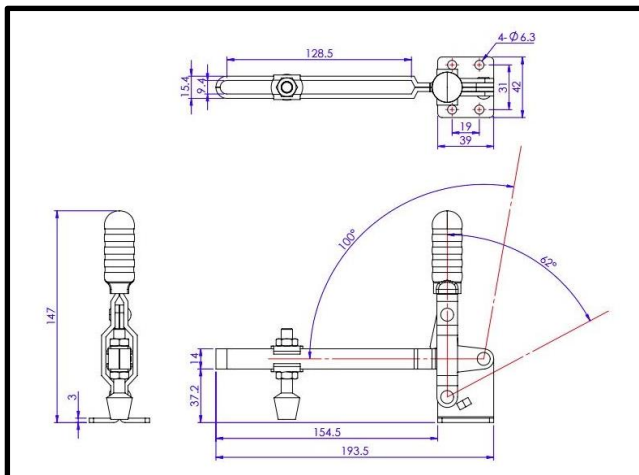
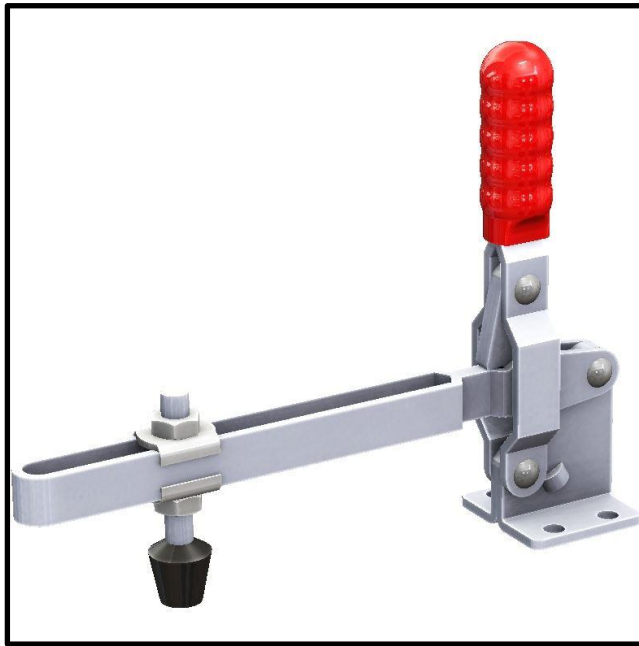


Vertical Toggle Clamp

Part No. GH-10150-E



Product Description

Vertical Toggle Clamp Flat Base
Slotted Arm Size 180Kg

Key Features

Overall Height: 147mm
Underarm Height: 37.2mm
Arm Length: 154.5mm
Holding Force: 250Kg

Other Features

Arm Opens: 100°
Handle Opens: 62°
Weight: 0.41Kg

Material

Clamp: Zinc Plated Mild Steel
Spindle: Neoprene Tipped Steel
Handle: uPVC

What's In The Bag?

GH-10150-E: Toggle Clamp
2x FW-516: Flanged Washers For 8mm Spindle
FC-086312: M8x63mm Neoprene Tipped Spindle
With Nuts



goodhanduk.co.uk

01908 221 151