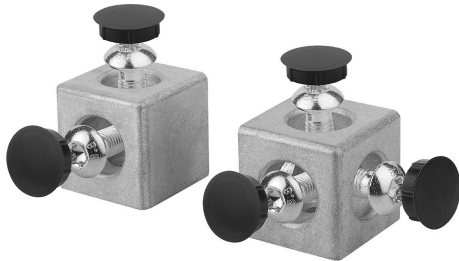


Cube connector sets Type B

Item description/product images



Description

Material:

Cube die-cast aluminium.

Screws steel.

End caps polyamide.

Version:

Aluminium bright.

Screws with self-tapping thread.

End cap black.

Note:

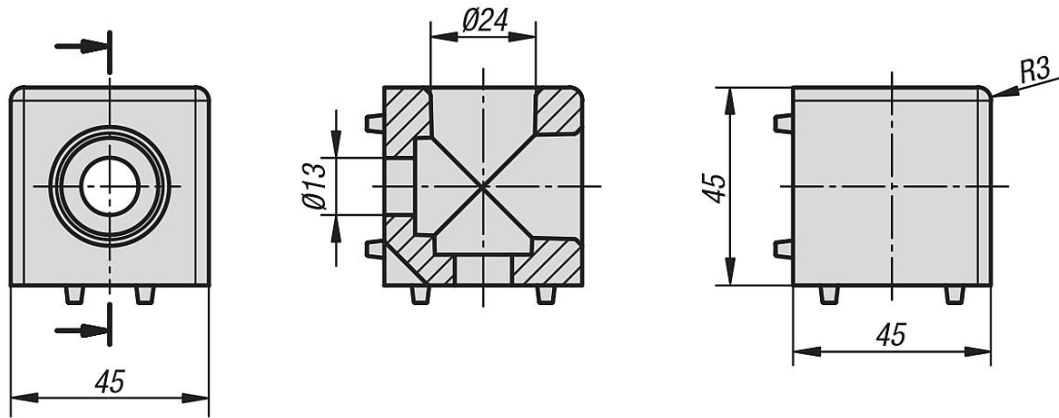
The cube connector can be used to connect two or three profiles to each other by the end faces. The cube connectors have guide lugs that ensure a perfect and secure installation. Fastening to the profile is carried out by self-tapping screws. The open holes can be closed off with the end caps.

The profile slots positioned at right-angles to each other remain free. Panel elements can be positioned in the profile slots without additional machining.

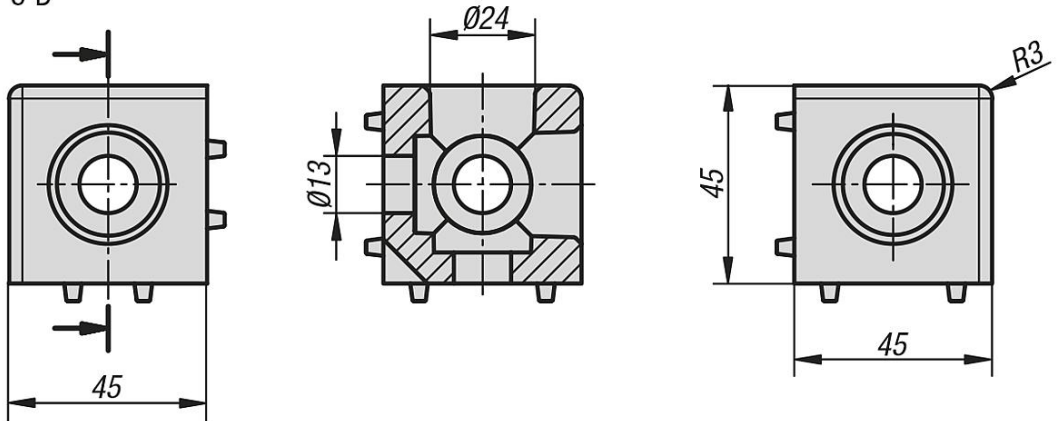
Cube connector sets Type B

Drawings

2-D



3-D



Overview of items

Cube connector sets Type B

Order No.	Type	Slot width	Version
K1039.102	B	10	2-D
K1039.103	B	10	3-D