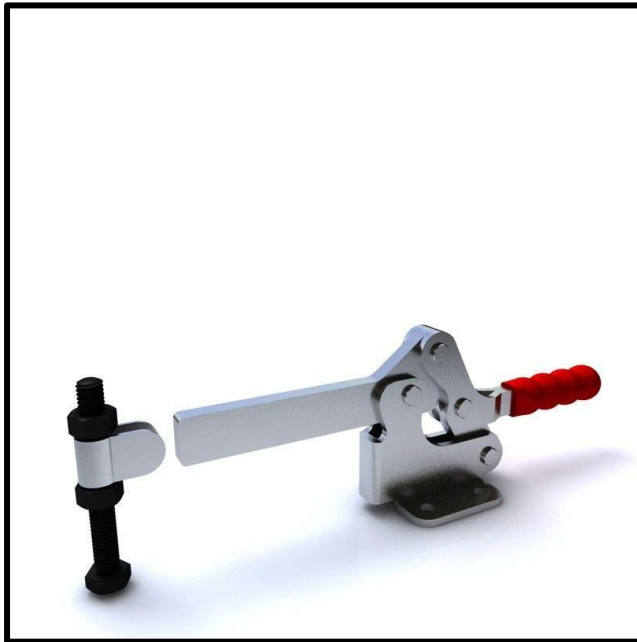


Horizontal Toggle Clamp
Part No. GH-24502-A



Product Description

Horizontal Toggle Clamp Flat
Base Solid Arm Size 450daN

Key Features

Overall Height:	111mm
Underarm Height:	59mm
Arm Length:	130mm
Holding Force:	450daN

Other Features

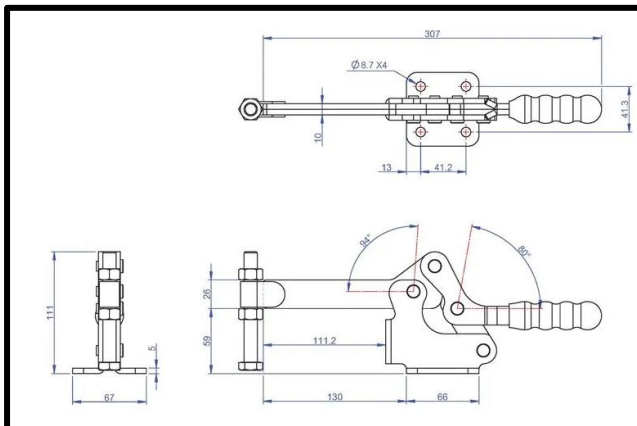
Arm Opens:	94°
Handle Opens:	80°
Weight:	1.46Kg

Material

Toggle Clamp:	Zinc Plated Mild Steel
Spindle:	Zinc Plated Mild Steel
Handle:	uPVC
Bolt Retainer:	BR-120

Whats In The Bag?

Toggle Clamp:	GH-24502-A
Spindle:	SA-121017
Bolt Retainer:	BR-120



goodhanduk.co.uk

01908 221 151