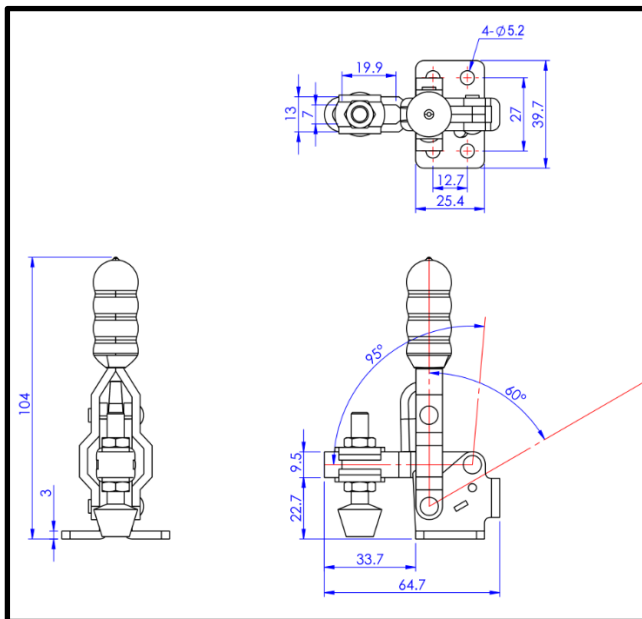


# Vertical Toggle Clamp

Part No. GH-12050-U



## Product Description

Vertical Toggle Clamp Flat Base  
Slotted Arm Size 91Kg

## Key Features

Overall Height: 104mm  
Underarm Height: 22.7mm  
Arm Length: 33.7mm  
Holding Force: 91Kg

## Other Features

Arm Opens: 95°  
Handle Opens: 60°  
Weight: 0.17Kg

## Material

Clamp: Zinc Plated Mild Steel  
Spindle: Neoprene Tipped Steel  
Handle: uPVC

## What's In The Bag?

GH-12050-U: Toggle Clamp  
2x FW-141: Flanged Washers For 6mm Spindle  
FC-064410: M6x44mm Neoprene Tipped Spindle  
With Nuts



[goodhanduk.co.uk](http://goodhanduk.co.uk)

01908 221 151

Vertical Toggle Clamp  
Part No. GH-12050-U

