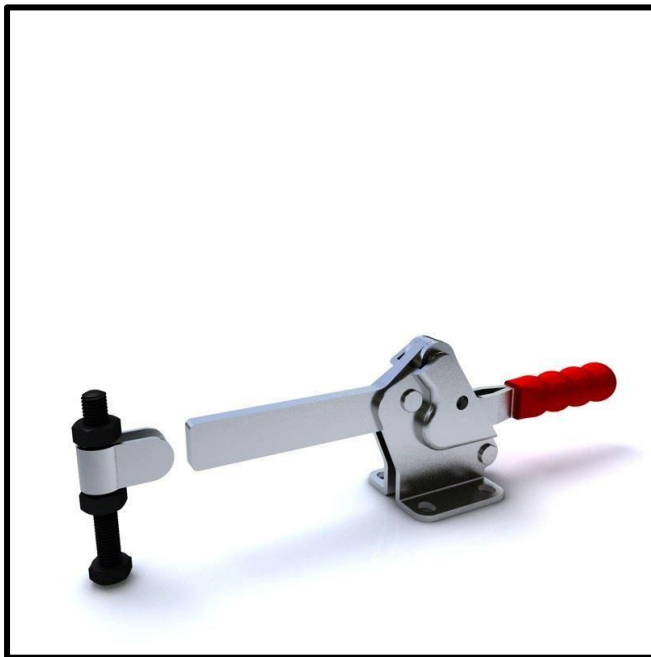


Horizontal Toggle Clamp

Part No. GH-23502-A



Product Description

Horizontal Toggle Clamp Flat
Base Solid Arm Size 350daN

Key Features

Overall Height:	90.1mm
Underarm Height:	45mm
Arm Length	111mm
Holding Force	350daN

Other Features

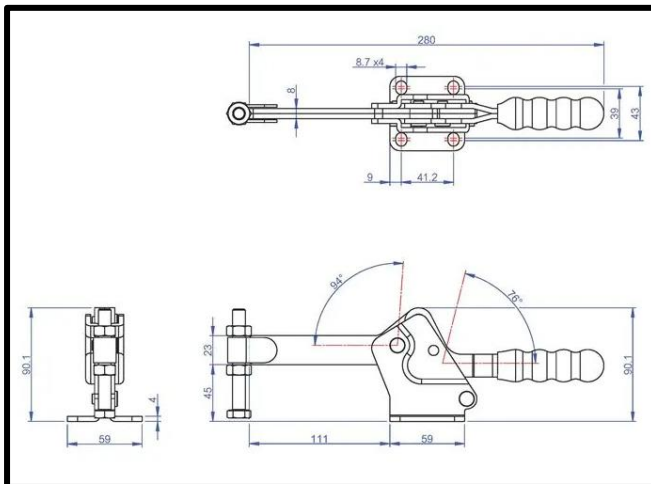
Arm Opens:	94°
Handle Opens:	76°
Weight:	0.98Kg

Material

Toggle Clamp:	Zinc Plated Mild Steel
Spindle:	Zinc Plated Mild Steel
Handle:	uPVC
Bolt Retainer	Zinc Plated Mild Steel

Whats In The Bag?

Toggle Clamp:	GH-23502-A
Spindle:	SA-108015
Bolt Retainer	BR-380



goodhanduk.co.uk

01908 221 151