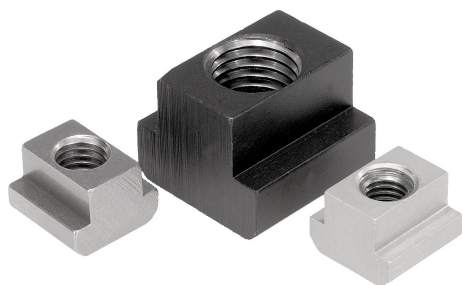


Nuts for T-slots DIN 508 enhanced

Item description/product images



Description

Material:

Carbon steel grade 10, EN AW-7075 or stainless steel 1.4305.

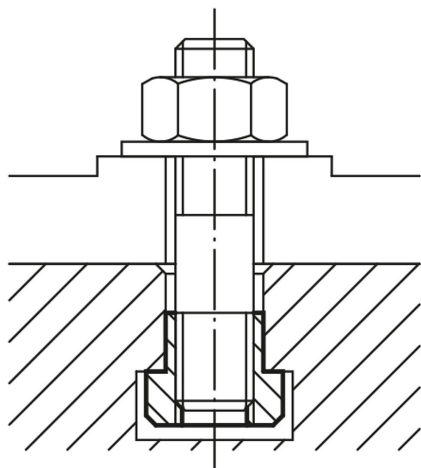
Version:

Steel black.

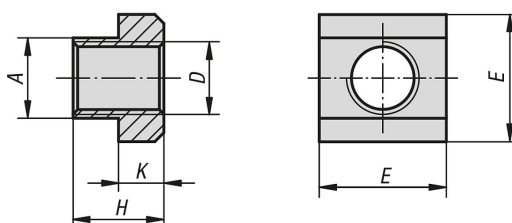
Aluminium and stainless steel bright.

Note:

Nuts for T-slots in aluminium have threaded steel inserts.



Drawings



Overview of items

Nuts for T-slots to DIN 508 enhanced

Order No.	Main material	Slot width	D	A	E	H	K
K0377.204	aluminium	6	M4	5,6	10	8	4
K0377.05	high carbon steel	6	M5	5,6	10	8	4
K0377.06	high carbon steel	8	M6	7,6	13	10	6
K0377.206	aluminium	8	M6	7,6	13	10	6
K0377.806	stainless steel	8	M6	7,6	13	10	6
K0377.2061	aluminium	10	M6	9,6	15	12	6
K0377.061	high carbon steel	10	M6	9,6	15	12	6
K0377.08	high carbon steel	10	M8	9,6	15	12	6
K0377.808	stainless steel	10	M8	9,6	15	12	6
K0377.208	aluminium	12	M8	11,6	18	14	7
K0377.081	high carbon steel	12	M8	11,6	18	14	7
K0377.810	stainless steel	12	M10	11,6	18	14	7
K0377.10	high carbon steel	12	M10	11,6	18	14	7
K0377.082	high carbon steel	14	M8	13,6	22	16	8

Nuts for T-slots DIN 508 enhanced

Overview of items

Order No.	Main material	Slot width	D	A	E	H	K
K0377.210	aluminium	14	M10	13,6	22	16	8
K0377.101	high carbon steel	14	M10	13,6	22	16	8
K0377.12	high carbon steel	14	M12	13,6	22	16	8
K0377.812	stainless steel	14	M12	13,6	22	16	8
K0377.121	high carbon steel	16	M12	15,6	25	18	9
K0377.814	stainless steel	16	M14	15,6	25	18	9
K0377.14	high carbon steel	16	M14	15,6	25	18	9
K0377.122	high carbon steel	18	M12	17,6	28	20	10
K0377.141	high carbon steel	18	M14	17,6	28	20	10
K0377.816	stainless steel	18	M16	17,6	28	20	10
K0377.16	high carbon steel	18	M16	17,6	28	20	10
K0377.123	high carbon steel	20	M12	19,6	32	24	12
K0377.161	high carbon steel	20	M16	19,6	32	24	12
K0377.18	high carbon steel	20	M18	19,6	32	24	12
K0377.216	aluminium	22	M16	21,6	35	28	14
K0377.124	high carbon steel	22	M12	21,6	35	28	14
K0377.181	high carbon steel	22	M18	21,6	35	28	14
K0377.20	high carbon steel	22	M20	21,6	35	28	14
K0377.163	high carbon steel	24	M16	23,6	40	32	16
K0377.201	high carbon steel	24	M20	23,6	40	32	16
K0377.22	high carbon steel	24	M22	23,6	40	32	16
K0377.164	high carbon steel	28	M16	27,6	44	36	18
K0377.202	high carbon steel	28	M20	27,6	44	36	18
K0377.24	high carbon steel	28	M24	27,6	44	36	18
K0377.27	high carbon steel	32	M27	31,5	50	40	20
K0377.241	high carbon steel	36	M24	35,5	54	44	22
K0377.30	high carbon steel	36	M30	35,5	54	44	22
K0377.36	high carbon steel	42	M36	41,5	65	52	26