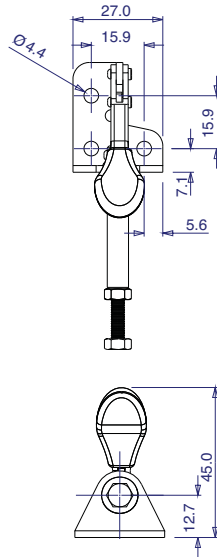
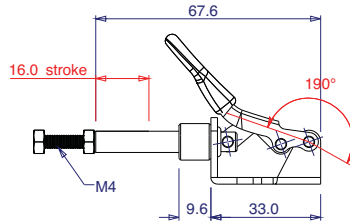


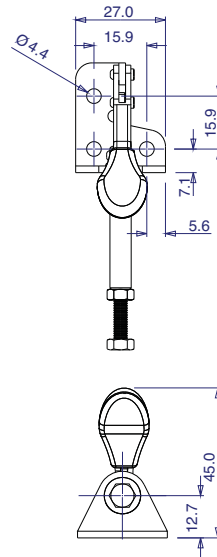
► Flat Base



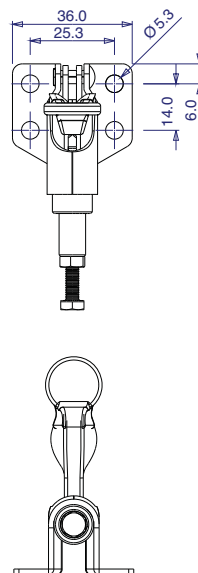
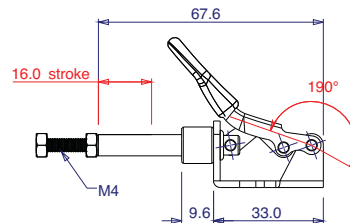
Part No:	GH-301-AM
Holding Force:	45Kg
Plunger Stroke:	16mm
Handle Opens:	190°
Weight:	0.05Kg
Spindle Supplied:	SA-042007
Flanged Washers Supplied:	-



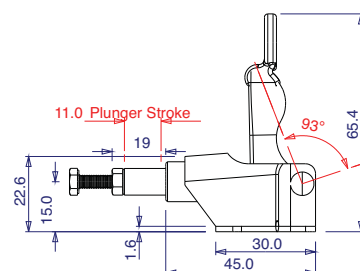
stainless



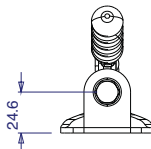
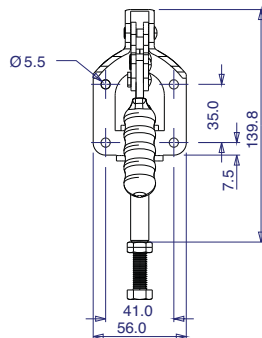
Part No:	GH-301-AMSS
Holding Force:	45Kg
Plunger Stroke:	16mm
Handle Opens:	190°
Weight:	0.05Kg
Spindle Supplied:	SA-042007-SS
Flanged Washers Supplied:	-



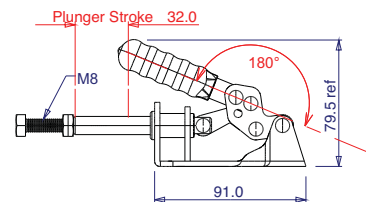
Part No:	GH-36006
Holding Force:	50Kg
Plunger Stroke:	11mm
Handle Opens:	93°
Weight:	0.07Kg
Spindle Supplied:	SA-041507
Flanged Washers Supplied:	-



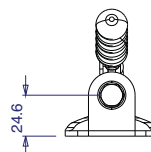
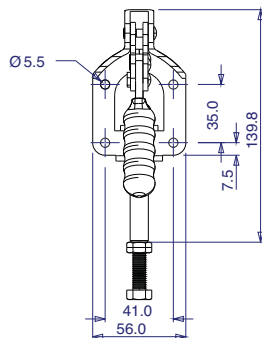
► Flat Base



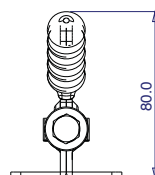
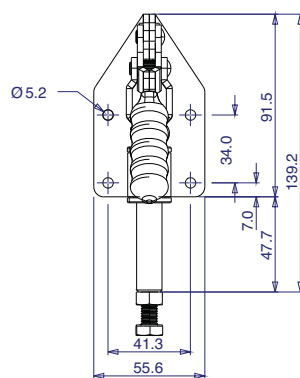
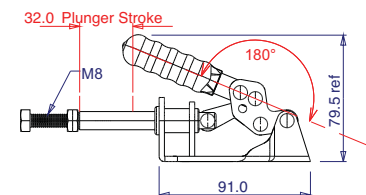
Part No:	GH-302-FM
Holding Force:	136Kg
Plunger Stroke:	32mm
Handle Opens:	180°
Weight:	0.30Kg
Spindle Supplied:	SA-085012
Flanged Washers Supplied:	-



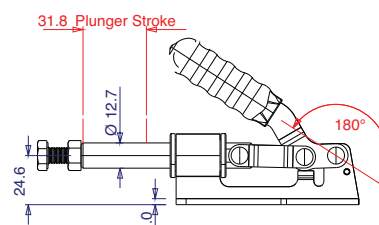
stainless



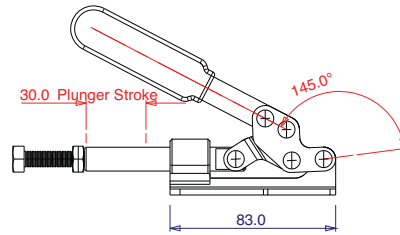
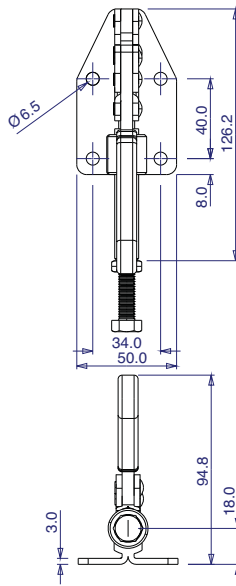
Part No:	GH-302-FMSS
Holding Force:	136Kg
Plunger Stroke:	32mm
Handle Opens:	180°
Weight:	0.30Kg
Spindle Supplied:	SA-085012-SS
Flanged Washers Supplied:	-



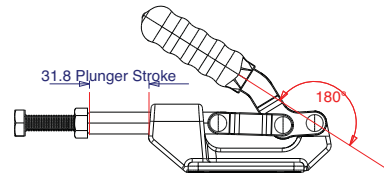
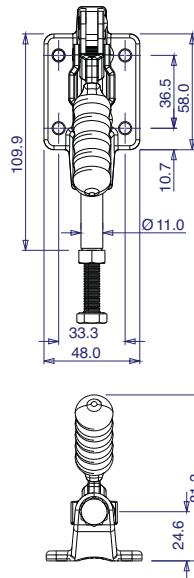
Part No:	GH-36092M
Holding Force:	180Kg
Plunger Stroke:	31.8mm
Handle Opens:	180°
Weight:	0.397Kg
Spindle Supplied:	SA-08501
Flanged Washers Supplied:	-



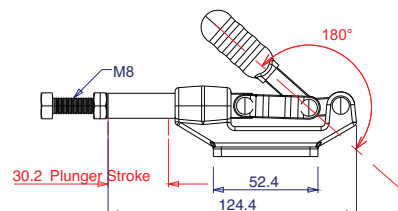
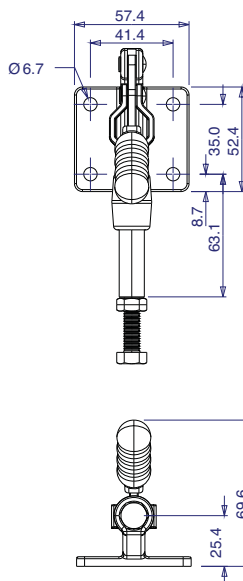
► Flat Base



Part No:	GH-36020M
Holding Force:	180Kg
Plunger Stroke:	30mm
Handle Opens:	145°
Weight:	0.35Kg
Spindle Supplied:	SA-085012
Flanged Washers Supplied:	-



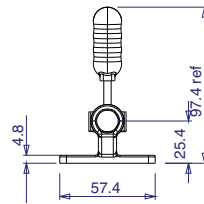
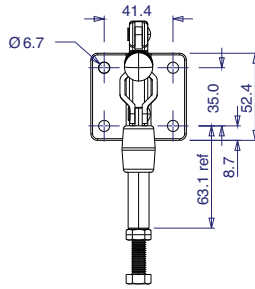
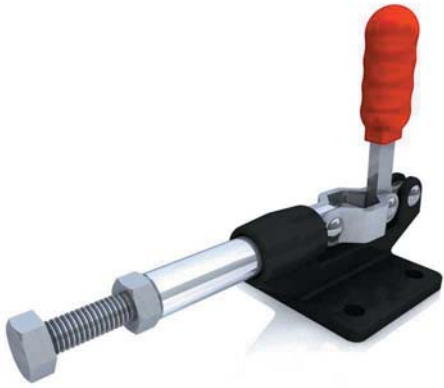
Part No:	GH-36003M
Holding Force:	272Kg
Plunger Stroke:	31.8mm
Handle Opens:	180°
Weight:	0.36Kg
Spindle Supplied:	SA-085012
Flanged Washers Supplied:	-



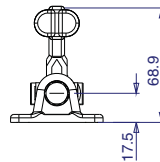
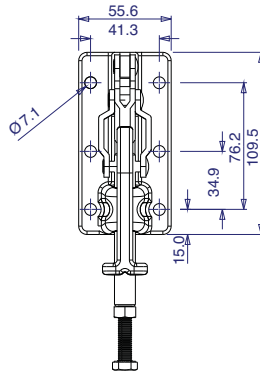
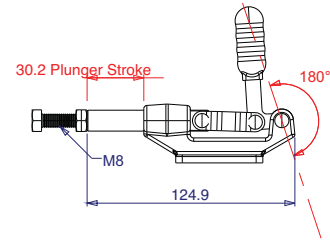
Part No:	GH-304-CM
Holding Force:	227Kg
Plunger Stroke:	30.2mm
Handle Opens:	180°
Weight:	0.34Kg
Spindle Supplied:	SA-085012
Flanged Washers Supplied:	-



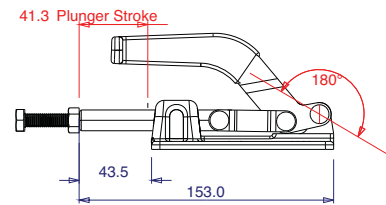
► Flat Base



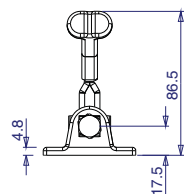
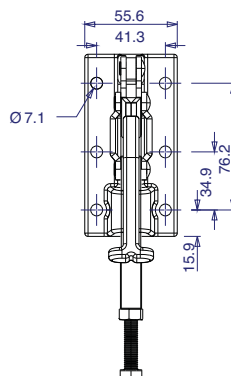
Part No:	GH-305-CM
Holding Force:	227Kg
Plunger Stroke:	30.2mm
Handle Opens:	90°
Weight:	0.34Kg
Spindle Supplied:	SA-085012
Flanged Washers Supplied:	-



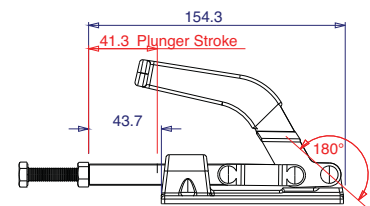
Part No:	GH-30607M
Holding Force:	318Kg
Plunger Stroke:	41.3mm
Handle Opens:	180°
Weight:	0.70Kg
Spindle Supplied:	SA-085012
Flanged Washers Supplied:	-



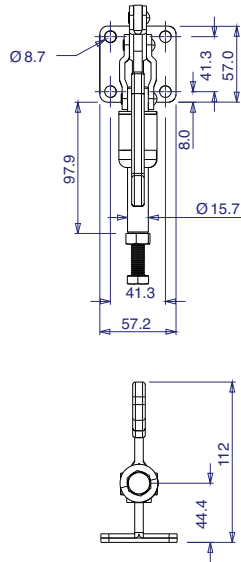
Square plunger



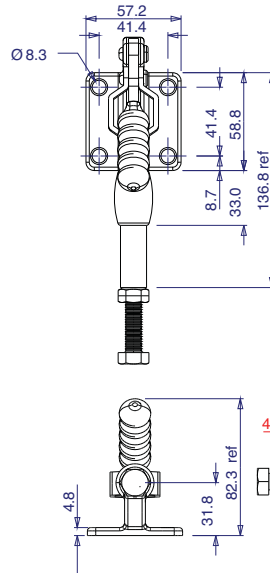
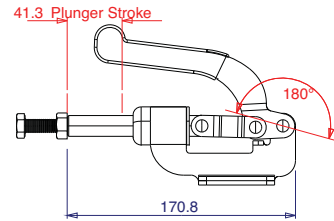
Part No:	GH-30608M
Holding Force:	318Kg
Plunger Stroke:	41.3mm
Handle Opens:	180°
Weight:	0.7Kg
Spindle Supplied:	SA-085012
Flanged Washers Supplied:	-



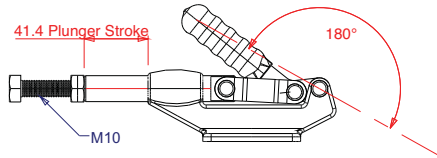
► Flat Base



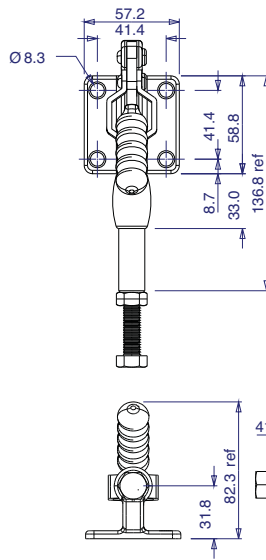
Part No:	GH-36010M
Holding Force:	364Kg
Plunger Stroke:	41.3mm
Handle Opens:	180°
Weight:	0.80Kg
Spindle Supplied:	SA-105015
Flanged Washers Supplied:	-



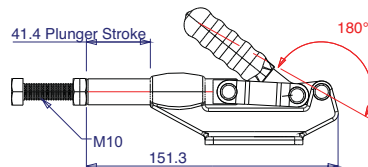
Part No:	GH-304-EM
Holding Force:	386Kg
Plunger Stroke:	41.4mm
Handle Opens:	180°
Weight:	0.58Kg
Spindle Supplied:	SA-105015
Flanged Washers Supplied:	-



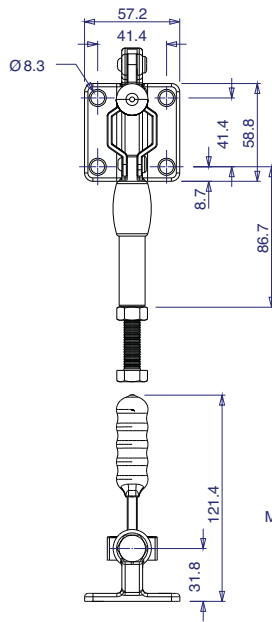
stainless



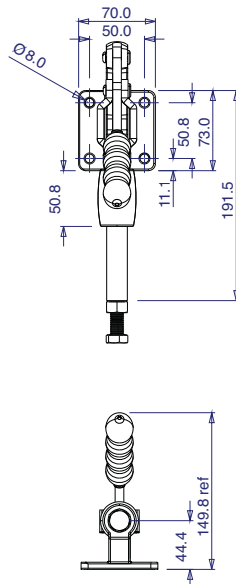
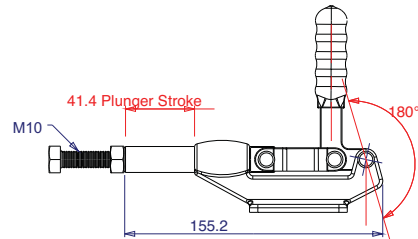
Part No:	GH-304-EMSS
Holding Force:	386Kg
Plunger Stroke:	41.4mm
Handle Opens:	180°
Weight:	0.58Kg
Spindle Supplied:	SA-105015-SS
Flanged Washers Supplied:	-



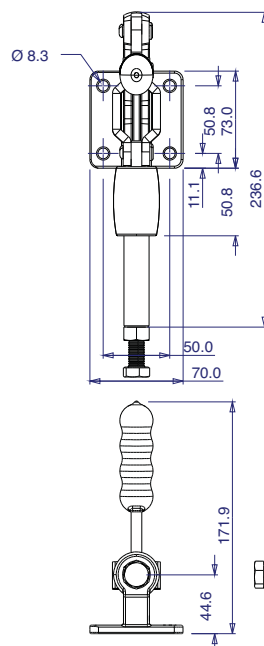
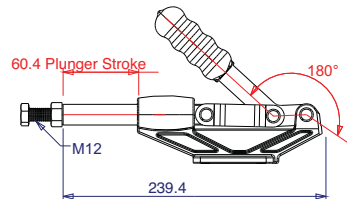
► Flat Base



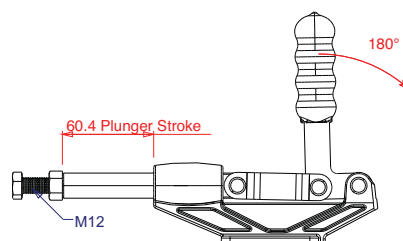
Part No:	GH-305-EM
Holding Force:	386Kg
Plunger Stroke:	41.4mm
Handle Opens:	90°
Weight:	0.58Kg
Spindle Supplied:	SA-105015
Flanged Washers Supplied:	-



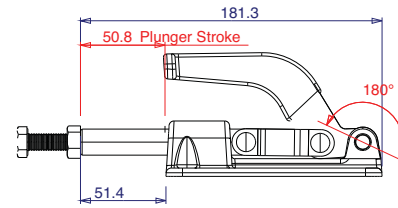
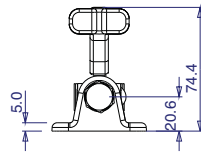
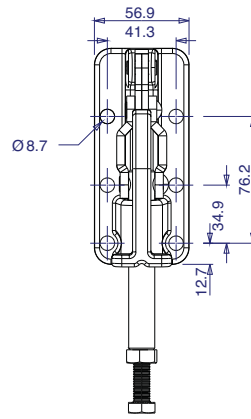
Part No:	GH-304-HM
Holding Force:	680Kg
Plunger Stroke:	60.4mm
Handle Opens:	180°
Weight:	1.48Kg
Spindle Supplied:	SA-125017
Flanged Washers Supplied:	-



Part No:	GH-305-HM
Holding Force:	680Kg
Plunger Stroke:	60.4mm
Handle Opens:	90°
Weight:	1.48Kg
Spindle Supplied:	SA-125017
Flanged Washers Supplied:	-



► Flat Base



Part No:	GH-36330M
Holding Force:	1136Kg
Plunger Stroke:	50.8mm
Handle Opens:	180°
Weight:	0.94Kg
Spindle Supplied:	SA-105015
Flanged Washers Supplied:	-