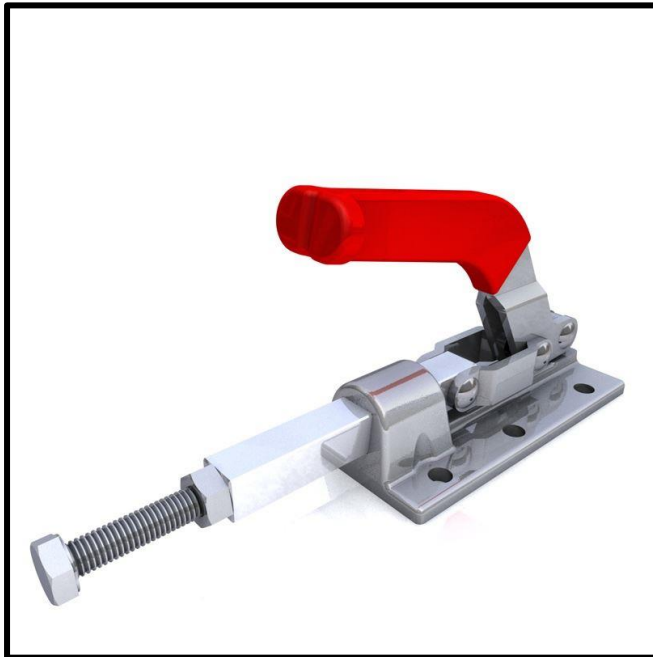


Push-Pull Toggle Clamp

Part No. GH-30608M



Product Description

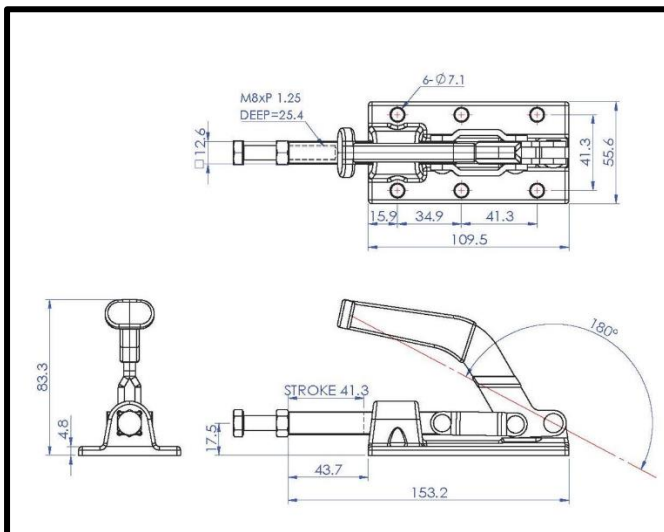
Push Pull Toggle Clamp Plunger
Stroke 41.3mm Size 318Kg

Key Features

Overall Height: 83.3mm
Length: 153.2mm
Stroke: 41.3mm
Holding Force: 318Kg

Other Features

Arm Opens: 180°
Weight: 0.69Kg



Material

Clamp: Zinc Plated Mild Steel
Spindle: Zinc Plated Mild Steel
Handle: uPVC

What's In The Bag?

GH-30608M: Toggle Clamp
SA-085012: M8x50mm Zinc Plated Steel Spindle
With Nut



goodhanduk.co.uk

01908 221 151