

# Horizontal Toggle Clamp

Part No. GH-201-BI



## Product Description

Horizontal Toggle Clamp Straight  
Base Slotted Arm Size 90daN

## Key Features

Overall Height:	50.6mm
Underarm Height:	37.9mm
Arm Length:	56.9mm
Holding Force:	90daN

## Other Features

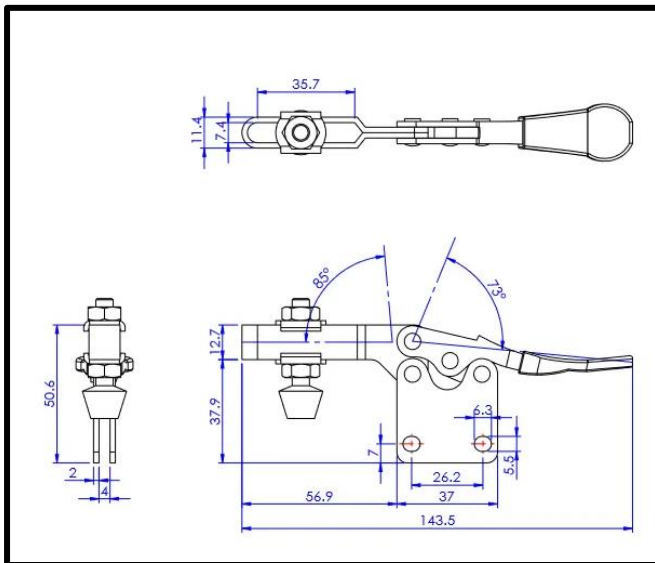
Arm Opens:	85°
Handle Opens:	73°
Weight:	0.13Kg

## Material

Toggle Clamp:	Zinc Plated Mild Steel
Spindle:	Neoprene Tipped
Handle:	Zinc Plated Mild Steel uPVC

## Whats In The Bag?

Toggle Clamp:	GH-201-BI
Spindle:	FC-064410
2x Flanged Washers:	FW-140



[goodhanduk.co.uk](http://goodhanduk.co.uk)

01908 221 151