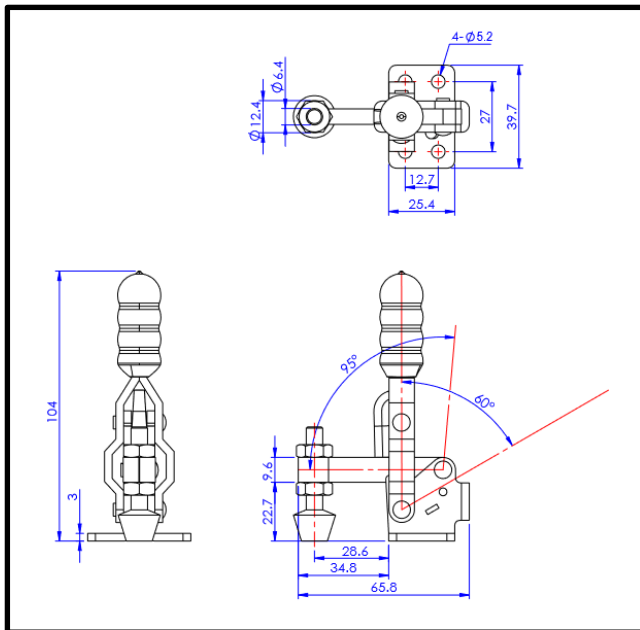


Vertical Toggle Clamp

Part No. GH-12050



Product Description

Vertical Toggle Clamp Flat Base
Fixed Arm Size 91Kg

Key Features

Overall Height: 104mm
Underarm Height: 22.7mm
Arm Length: 28.6mm
Holding Force: 91Kg

Other Features

Arm Opens: 95°
Handle Opens: 60°
Weight: 0.16Kg

Material

Clamp: Zinc Plated Mild Steel
Spindle: Neoprene Tipped Steel
Handle: uPVC

What's In The Bag?

GH-12050: Toggle Clamp
FC-064410: M6x40mm Neoprene Tipped Steel
Spindle With Nuts



goodhanduk.co.uk

01908 221 151