

## Positioning feet

### Item description/product images



### Description

#### Material:

Body high carbon steel.

#### Version:

Body tempered and black oxidised.

Contact faces case-hardened.

#### Note:

These positioning feet are used as supports for rough and machined parts. They can also be used as stops and thrust pads in fixtures and toolmaking.

#### Drawing reference:

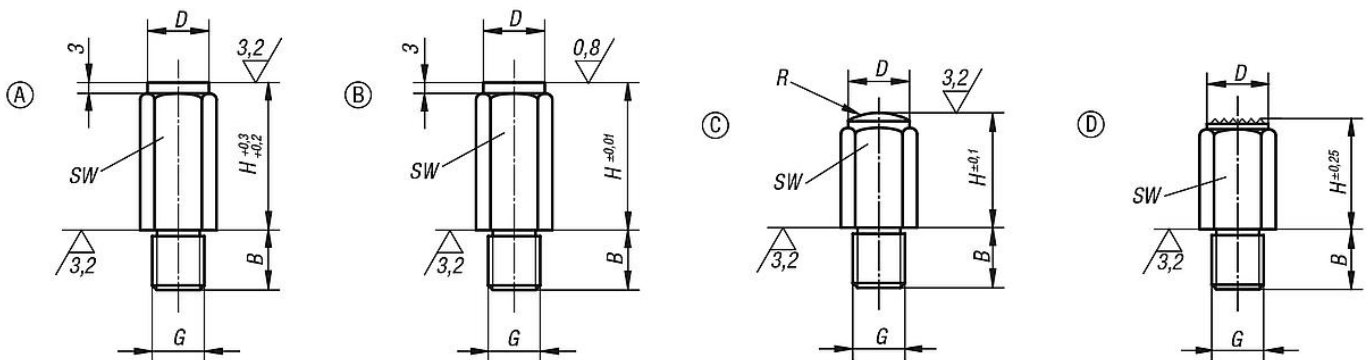
Form A: Flat face hardened

Form B: Flat face hardened and ground

Form C: Spherical face hardened

Form D: Serrated face tempered

### Drawings



### Overview of items

#### Positioning feet

| Order No. Form A | Order No. Form B | Order No. Form C | Order No. Form D | B  | D  | G   | H  | R       | SW |
|------------------|------------------|------------------|------------------|----|----|-----|----|---------|----|
| K0299.106010     | K0299.206010     | K0299.306010     | K0299.406010     | 11 | 10 | M6  | 10 | -/-15/- | 10 |
| K0299.106020     | K0299.206020     | K0299.306020     | K0299.406020     | 11 | 10 | M6  | 20 | -/-15/- | 10 |
| K0299.108010     | K0299.208010     | K0299.308010     | -                | 13 | 13 | M8  | 10 | -/-20/- | 13 |
| K0299.108015     | K0299.208015     | K0299.308015     | K0299.408015     | 13 | 13 | M8  | 15 | -/-20/- | 13 |
| K0299.108030     | K0299.208030     | K0299.308030     | K0299.408030     | 13 | 13 | M8  | 30 | -/-20/- | 13 |
| K0299.110010     | K0299.210010     | K0299.310010     | -                | 16 | 17 | M10 | 10 | -/-30/- | 17 |
| K0299.110020     | K0299.210020     | K0299.310020     | K0299.410020     | 16 | 17 | M10 | 20 | -/-30/- | 17 |
| K0299.110040     | K0299.210040     | K0299.310040     | K0299.410040     | 16 | 17 | M10 | 40 | -/-30/- | 17 |
| K0299.112010     | K0299.212010     | K0299.312010     | -                | 20 | 19 | M12 | 10 | -/-40/- | 19 |
| K0299.112025     | K0299.212025     | K0299.312025     | K0299.412025     | 20 | 19 | M12 | 25 | -/-35/- | 19 |
| K0299.112050     | K0299.212050     | K0299.312050     | K0299.412050     | 20 | 19 | M12 | 50 | -/-35/- | 19 |
| K0299.116015     | K0299.216015     | K0299.316015     | -                | 24 | 27 | M16 | 15 | -/-50/- | 27 |
| K0299.116030     | K0299.216030     | K0299.316030     | K0299.416030     | 24 | 27 | M16 | 30 | -/-50/- | 27 |
| K0299.116060     | K0299.216060     | K0299.316060     | K0299.416060     | 24 | 27 | M16 | 60 | -/-50/- | 27 |
| K0299.120040     | K0299.220040     | K0299.320040     | K0299.420040     | 29 | 32 | M20 | 40 | -/-60/- | 32 |
| K0299.120080     | K0299.220080     | K0299.320080     | K0299.420080     | 29 | 32 | M20 | 80 | -/-60/- | 32 |

