

Push-Pull Toggle Clamp

Part No. GH-305-CM

GH GoodHand UK



Product Description

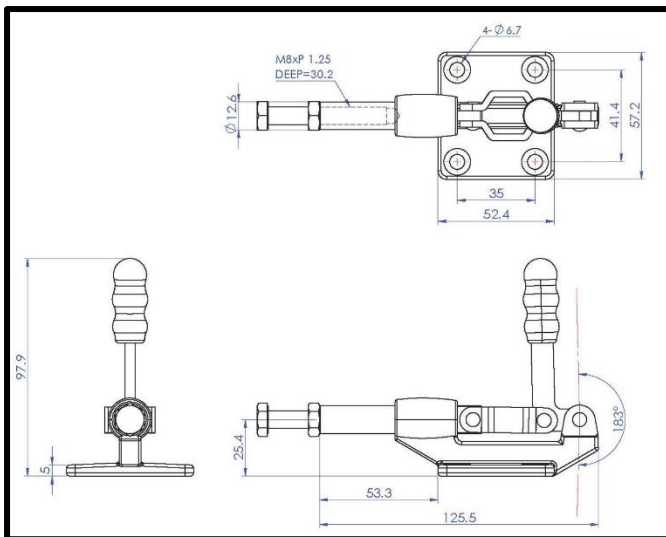
Push Pull Toggle Clamp Plunger
Stroke 32mm Size 227Kg

Key Features

Overall Height: 97.9mm
Length: 125.5mm
Stroke: 53.3mm
Holding Force: 227Kg

Other Features

Arm Opens: 183°
Weight: 0.345Kg



Material

Clamp: Zinc Plated Mild Steel
Spindle: Zinc Plated Mild Steel
Handle: uPVC

What's In The Bag?

GH-305-CM: Toggle Clamp
SA-085012: M8x50mm Zinc Plated Steel Spindle
With Nut

GH GoodHand UK

goodhanduk.co.uk

01908 221 151