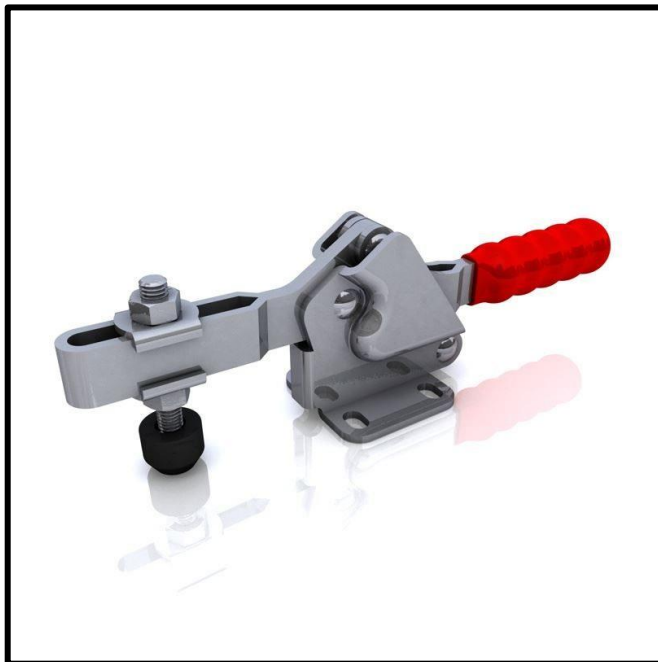


# Horizontal Toggle Clamp

Part No. GH-21502-BSS



## Product Description

Stainless Steel Horizontal Clamp  
Flat Base Size 150daN

## Key Features

Overall Height:	52.1mm
Arm Length:	181mm
Underarm Height:	25mm
Holding Force:	150daN

## Other Features

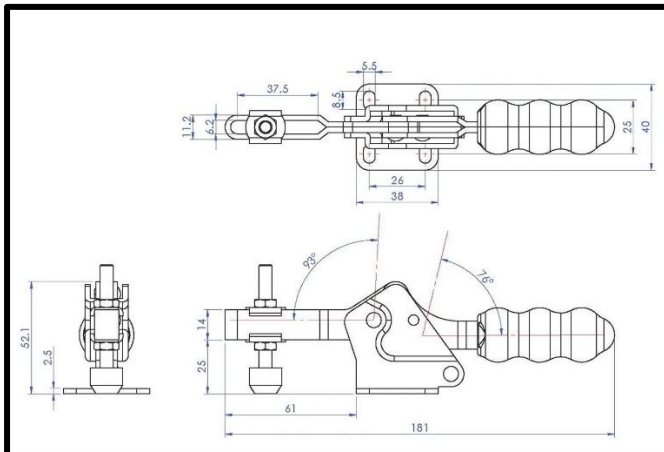
Arm Opens:	93°
Handle Opens:	76°
Weight:	0.245Kg

## Material

Toggle Clamp:	304 Stainless Steel
Handle:	uPVC
Spindle:	304 Stainless Steel
Flanged Washers:	304 Stainless Steel
Cap:	Neoprene

## Whats In The Bag?

Toggle Clamp:	GH-21502-BSS
Spindle:	SA-065010-SS
Flanged Washers:	FW-140-SS
Cap:	NC-06



[goodhanduk.co.uk](http://goodhanduk.co.uk)

01908 221 151