

## Clamping levers internal thread

### Item description/product images



### Description

**Material:**

Handle die-cast zinc DIN EN 12844.

Steel parts grade 5.8.

**Version:**

Handle powder-coated or high-gloss chromed.

Steel parts black oxidised.

**Note:**

Standard colours are:

black satin finish, orange RAL 2004, ruby red RAL 3003, silver metallic, high gloss chromed.

**On request:**

Other threads, colours and special versions.

Dimension "H1" available in other lengths at extra charge.

# Clamping levers internal thread

Item description/product images

---

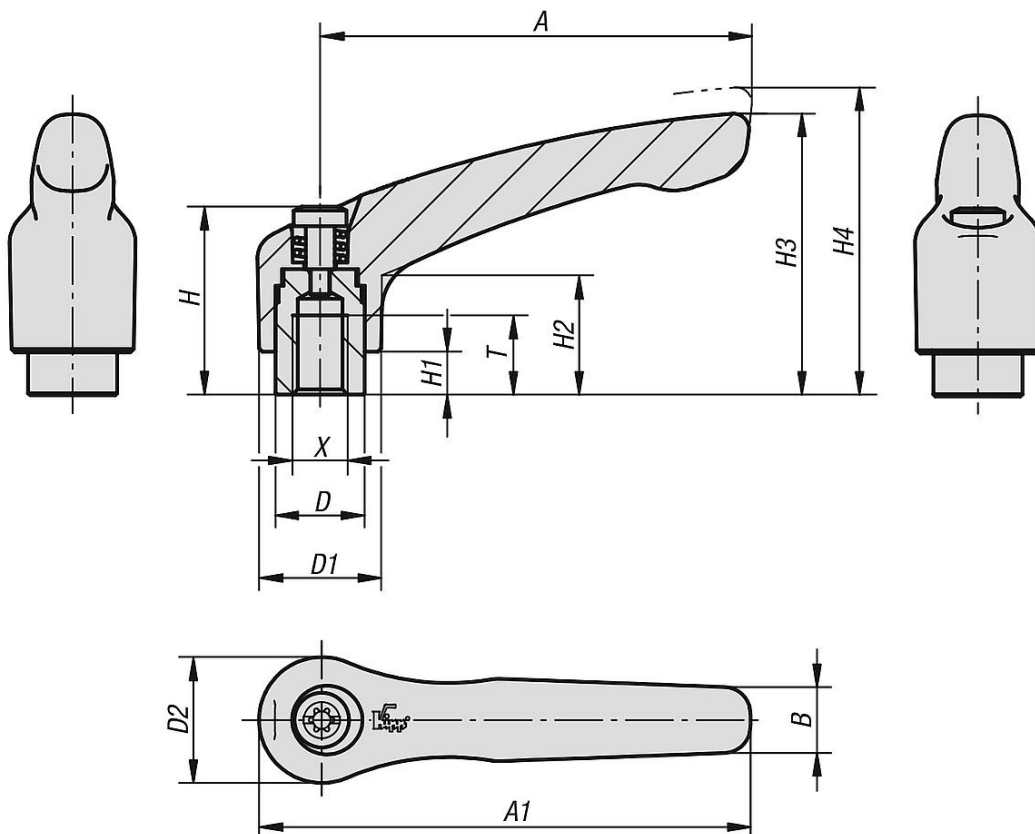


# Clamping levers internal thread

Item description/product images



Drawings



Overview of items

Clamping levers with internal thread

# Clamping levers internal thread

## Overview of items

Order No.	Main colour	Main material	Size	X	T	D	D1	D2	H	H1	H2	H3	H4	A	A1	B	No. of teeth
K0122.0031	black	zinc	0	M3	9	10	13	14	24,5	4	14,5	30	33	30	37	7	16
K0122.0032	orange RAL 2004	zinc	0	M3	9	10	13	14	24,5	4	14,5	30	33	30	37	7	16
K0122.00327	ruby red	zinc	0	M3	9	10	13	14	24,5	4	14,5	30	33	30	37	7	16
K0122.0033	silver metallic	zinc	0	M3	9	10	13	14	24,5	4	14,5	30	33	30	37	7	16
K0122.0036	silver	zinc	0	M3	9	10	13	14	24,5	4	14,5	30	33	30	37	7	16
K0122.0041	black	zinc	0	M4	9	10	13	14	24,5	4	14,5	30	33	30	37	7	16
K0122.0042	orange RAL 2004	zinc	0	M4	9	10	13	14	24,5	4	14,5	30	33	30	37	7	16
K0122.00427	ruby red	zinc	0	M4	9	10	13	14	24,5	4	14,5	30	33	30	37	7	16
K0122.0043	silver metallic	zinc	0	M4	9	10	13	14	24,5	4	14,5	30	33	30	37	7	16
K0122.0046	silver	zinc	0	M4	9	10	13	14	24,5	4	14,5	30	33	30	37	7	16
K0122.0051	black	zinc	0	M5	9	10	13	14	24,5	4	14,5	30	33	30	37	7	16
K0122.0052	orange RAL 2004	zinc	0	M5	9	10	13	14	24,5	4	14,5	30	33	30	37	7	16
K0122.00527	ruby red	zinc	0	M5	9	10	13	14	24,5	4	14,5	30	33	30	37	7	16
K0122.0053	silver metallic	zinc	0	M5	9	10	13	14	24,5	4	14,5	30	33	30	37	7	16
K0122.0056	silver	zinc	0	M5	9	10	13	14	24,5	4	14,5	30	33	30	37	7	16
K0122.1041	black	zinc	1	M4	9	10	13	14	24,5	4	14,5	31	34	40	47	7	16
K0122.1042	orange RAL 2004	zinc	1	M4	9	10	13	14	24,5	4	14,5	31	34	40	47	7	16
K0122.10427	ruby red	zinc	1	M4	9	10	13	14	24,5	4	14,5	31	34	40	47	7	16
K0122.1043	silver metallic	zinc	1	M4	9	10	13	14	24,5	4	14,5	31	34	40	47	7	16
K0122.1046	silver	zinc	1	M4	9	10	13	14	24,5	4	14,5	31	34	40	47	7	16
K0122.1051	black	zinc	1	M5	9	10	13	14	24,5	4	14,5	31	34	40	47	7	16
K0122.1052	orange RAL 2004	zinc	1	M5	9	10	13	14	24,5	4	14,5	31	34	40	47	7	16
K0122.10527	ruby red	zinc	1	M5	9	10	13	14	24,5	4	14,5	31	34	40	47	7	16
K0122.1053	silver metallic	zinc	1	M5	9	10	13	14	24,5	4	14,5	31	34	40	47	7	16
K0122.1056	silver	zinc	1	M5	9	10	13	14	24,5	4	14,5	31	34	40	47	7	16
K0122.1061	black	zinc	1	M6	9	10	13	14	24,5	4	14,5	31	34	40	47	7	16
K0122.1062	orange RAL 2004	zinc	1	M6	9	10	13	14	24,5	4	14,5	31	34	40	47	7	16
K0122.10627	ruby red	zinc	1	M6	9	10	13	14	24,5	4	14,5	31	34	40	47	7	16
K0122.1063	silver metallic	zinc	1	M6	9	10	13	14	24,5	4	14,5	31	34	40	47	7	16
K0122.1066	silver	zinc	1	M6	9	10	13	14	24,5	4	14,5	31	34	40	47	7	16
K0122.2061	black	zinc	2	M6	12	13,5	18,5	19	28,5	6,5	17,5	42,5	45,5	65	74,5	9,5	20
K0122.2062	orange RAL 2004	zinc	2	M6	12	13,5	18,5	19	28,5	6,5	17,5	42,5	45,5	65	74,5	9,5	20
K0122.20627	ruby red	zinc	2	M6	12	13,5	18,5	19	28,5	6,5	17,5	42,5	45,5	65	74,5	9,5	20
K0122.2063	silver metallic	zinc	2	M6	12	13,5	18,5	19	28,5	6,5	17,5	42,5	45,5	65	74,5	9,5	20
K0122.2066	silver	zinc	2	M6	12	13,5	18,5	19	28,5	6,5	17,5	42,5	45,5	65	74,5	9,5	20
K0122.2081	black	zinc	2	M8	12	13,5	18,5	19	28,5	6,5	17,5	42,5	45,5	65	74,5	9,5	20
K0122.2082	orange RAL 2004	zinc	2	M8	12	13,5	18,5	19	28,5	6,5	17,5	42,5	45,5	65	74,5	9,5	20
K0122.20827	ruby red	zinc	2	M8	12	13,5	18,5	19	28,5	6,5	17,5	42,5	45,5	65	74,5	9,5	20
K0122.2083	silver metallic	zinc	2	M8	12	13,5	18,5	19	28,5	6,5	17,5	42,5	45,5	65	74,5	9,5	20
K0122.2086	silver	zinc	2	M8	12	13,5	18,5	19	28,5	6,5	17,5	42,5	45,5	65	74,5	9,5	20
K0122.3081	black	zinc	3	M8	14	16	21	22	37	10	24	54,5	58,5	80	91	11	22
K0122.3082	orange RAL 2004	zinc	3	M8	14	16	21	22	37	10	24	54,5	58,5	80	91	11	22
K0122.30827	ruby red	zinc	3	M8	14	16	21	22	37	10	24	54,5	58,5	80	91	11	22
K0122.3083	silver metallic	zinc	3	M8	14	16	21	22	37	10	24	54,5	58,5	80	91	11	22
K0122.3086	silver	zinc	3	M8	14	16	21	22	37	10	24	54,5	58,5	80	91	11	22
K0122.3101	black	zinc	3	M10	14	16	21	22	37	10	24	54,5	58,5	80	91	11	22
K0122.3102	orange RAL 2004	zinc	3	M10	14	16	21	22	37	10	24	54,5	58,5	80	91	11	22
K0122.31027	ruby red	zinc	3	M10	14	16	21	22	37	10	24	54,5	58,5	80	91	11	22
K0122.3103	silver metallic	zinc	3	M10	14	16	21	22	37	10	24	54,5	58,5	80	91	11	22
K0122.3106	silver	zinc	3	M10	14	16	21	22	37	10	24	54,5	58,5	80	91	11	22
K0122.4101	black	zinc	4	M10	17	19	27	27,5	43	10	27	63	67,5	95	109	13	24
K0122.4102	orange RAL 2004	zinc	4	M10	17	19	27	27,5	43	10	27	63	67,5	95	109	13	24
K0122.41027	ruby red	zinc	4	M10	17	19	27	27,5	43	10	27	63	67,5	95	109	13	24
K0122.4103	silver metallic	zinc	4	M10	17	19	27	27,5	43	10	27	63	67,5	95	109	13	24
K0122.4106	silver	zinc	4	M10	17	19	27	27,5	43	10	27	63	67,5	95	109	13	24
K0122.4121	black	zinc	4	M12	17	19	27	27,5	43	10	27	63	67,5	95	109	13	24
K0122.4122	orange RAL 2004	zinc	4	M12	17	19	27	27,5	43	10	27	63	67,5	95	109	13	24
K0122.41227	ruby red	zinc	4	M12	17	19	27	27,5	43	10	27	63	67,5	95	109	13	24
K0122.4123	silver metallic	zinc	4	M12	17	19	27	27,5	43	10	27	63	67,5	95	109	13	24
K0122.4126	silver	zinc	4	M12	17	19	27	27,5	43	10	27	63	67,5	95	109	13	24
K0122.5121	black	zinc	5	M12	23	23	31	32	49	12	31,5	73	77,5	110	126	15	26
K0122.5122	orange RAL 2004	zinc	5	M12	23	23	31	32	49	12	31,5	73	77,5	110	126	15	26

## Clamping levers internal thread

### Overview of items

Order No.	Main colour	Main material	Size	X	T	D	D1	D2	H	H1	H2	H3	H4	A	A1	B	No. of teeth
<b>K0122.51227</b>	ruby red	zinc	5	M12	23	23	31	32	49	12	31,5	73	77,5	110	126	15	26
<b>K0122.5123</b>	silver metallic	zinc	5	M12	23	23	31	32	49	12	31,5	73	77,5	110	126	15	26
<b>K0122.5126</b>	silver	zinc	5	M12	23	23	31	32	49	12	31,5	73	77,5	110	126	15	26
<b>K0122.5161</b>	black	zinc	5	M16	23	23	31	32	49	12	31,5	73	77,5	110	126	15	26
<b>K0122.5162</b>	orange RAL 2004	zinc	5	M16	23	23	31	32	49	12	31,5	73	77,5	110	126	15	26
<b>K0122.51627</b>	ruby red	zinc	5	M16	23	23	31	32	49	12	31,5	73	77,5	110	126	15	26
<b>K0122.5163</b>	silver metallic	zinc	5	M16	23	23	31	32	49	12	31,5	73	77,5	110	126	15	26
<b>K0122.5166</b>	silver	zinc	5	M16	23	23	31	32	49	12	31,5	73	77,5	110	126	15	26