

# Cam-action indexing plungers

## Item description/product images



### Description

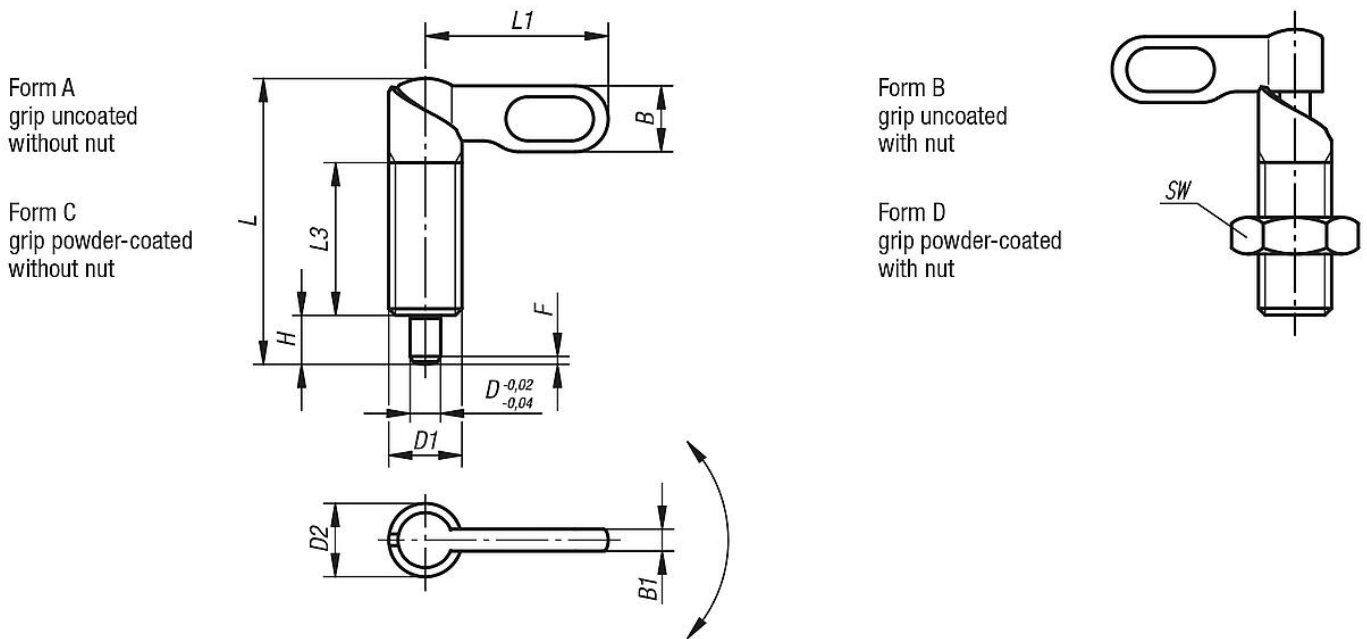
**Material:**  
Steel grade 5.8.

**Version:**  
Black oxidised.  
Pin hardened and ground.

**Note:**  
Cam-action indexing plungers are used when the indexing pin should not project all the time. Turning the handle through 180° retracts the pin and a notch ensures that the handle remains in this position.

**Drawing reference:**  
Form A: grip uncoated without nut  
Form C: grip powder-coated without nut  
Form B: grip uncoated with nut  
Form D: grip powder-coated with nut

## Drawings



## Overview of items

### Cam-action indexing plungers

| Order No.     | Form | D | D1    | D2 | L  | L1 | L3 | B | B1 | H | SW | Fx30° | Spring force<br>initial pressure<br>F1 approx. N | Spring force<br>final pressure<br>F2 approx. N |
|---------------|------|---|-------|----|----|----|----|---|----|---|----|-------|--|--|
| K0348.040410  | A    | 4 | M10   | 10 | 38 | 25 | 20 | 9 | 3  | 6 | -  | 1     | 8  | 14   |
| K0348.040510  | A    | 5 | M10   | 10 | 38 | 25 | 20 | 9 | 3  | 6 | -  | 1,3   | 8  | 14   |
| K0348.040610  | A    | 6 | M10   | 10 | 38 | 25 | 20 | 9 | 3  | 6 | -  | 1,8   | 8  | 14   |
| K0348.0404101 | A    | 4 | M10x1 | 10 | 38 | 25 | 20 | 9 | 3  | 6 | -  | 1     | 8  | 14   |
| K0348.0405101 | A    | 5 | M10x1 | 10 | 38 | 25 | 20 | 9 | 3  | 6 | -  | 1,3   | 8  | 14   |
| K0348.0406101 | A    | 6 | M10x1 | 10 | 38 | 25 | 20 | 9 | 3  | 6 | -  | 1,8   | 8  | 14   |

## Cam-action indexing plungers

### Overview of items

| Order No.     | Form | D  | D1      | D2 | L    | L1 | L3 | B    | B1  | H  | SW | Fx30° | Spring force<br>initial pressure<br>F1 approx. N | Spring force<br>final pressure<br>F2 approx. N |
|---------------|------|----|---------|----|------|----|----|------|-----|----|----|-------|--|--|
| K0348.040512  | A    | 5  | M12     | 12 | 46,8 | 30 | 25 | 10,8 | 3,6 | 8  | -  | 1,3   | 8  | 15   |
| K0348.040612  | A    | 6  | M12     | 12 | 46,8 | 30 | 25 | 10,8 | 3,6 | 8  | -  | 1,8   | 8  | 15   |
| K0348.040812  | A    | 8  | M12     | 12 | 46,8 | 30 | 25 | 10,8 | 3,6 | 8  | -  | 2,3   | 8  | 15   |
| K0348.0405121 | A    | 5  | M12x1,5 | 12 | 46,8 | 30 | 25 | 10,8 | 3,6 | 8  | -  | 1,3   | 8  | 15   |
| K0348.0406121 | A    | 6  | M12x1,5 | 12 | 46,8 | 30 | 25 | 10,8 | 3,6 | 8  | -  | 1,8   | 8  | 15   |
| K0348.0408121 | A    | 8  | M12x1,5 | 12 | 46,8 | 30 | 25 | 10,8 | 3,6 | 8  | -  | 2,3   | 8  | 15   |
| K0348.040616  | A    | 6  | M16     | 16 | 60,4 | 40 | 32 | 14,4 | 4,8 | 10 | -  | 1,8   | 15   | 35   |
| K0348.040816  | A    | 8  | M16     | 16 | 60,4 | 40 | 32 | 14,4 | 4,8 | 10 | -  | 2,3   | 15   | 35   |
| K0348.041016  | A    | 10 | M16     | 16 | 60,4 | 40 | 32 | 14,4 | 4,8 | 10 | -  | 2,8   | 15   | 35   |
| K0348.0406161 | A    | 6  | M16x1,5 | 16 | 60,4 | 40 | 32 | 14,4 | 4,8 | 10 | -  | 1,8   | 15   | 35   |
| K0348.0408161 | A    | 8  | M16x1,5 | 16 | 60,4 | 40 | 32 | 14,4 | 4,8 | 10 | -  | 2,3   | 15   | 35   |
| K0348.0410161 | A    | 10 | M16x1,5 | 16 | 60,4 | 40 | 32 | 14,4 | 4,8 | 10 | -  | 2,8   | 15   | 35   |
| K0348.040820  | A    | 8  | M20     | 20 | 70   | 50 | 35 | 18   | 6   | 12 | -  | 2,3   | 20   | 60   |
| K0348.041020  | A    | 10 | M20     | 20 | 70   | 50 | 35 | 18   | 6   | 12 | -  | 2,8   | 20   | 60   |
| K0348.041220  | A    | 12 | M20     | 20 | 70   | 50 | 35 | 18   | 6   | 12 | -  | 3     | 20   | 60   |
| K0348.0408201 | A    | 8  | M20x1,5 | 20 | 70   | 50 | 35 | 18   | 6   | 12 | -  | 2,3   | 20   | 60   |
| K0348.0410201 | A    | 10 | M20x1,5 | 20 | 70   | 50 | 35 | 18   | 6   | 12 | -  | 2,8   | 20   | 60   |
| K0348.0412201 | A    | 12 | M20x1,5 | 20 | 70   | 50 | 35 | 18   | 6   | 12 | -  | 3     | 20   | 60   |
| K0348.060410  | C    | 4  | M10     | 10 | 38   | 25 | 20 | 9    | 3   | 6  | -  | 1     | 8  | 14   |
| K0348.060510  | C    | 5  | M10     | 10 | 38   | 25 | 20 | 9    | 3   | 6  | -  | 1,3   | 8  | 14   |
| K0348.060610  | C    | 6  | M10     | 10 | 38   | 25 | 20 | 9    | 3   | 6  | -  | 1,8   | 8  | 14   |
| K0348.0604101 | C    | 4  | M10x1   | 10 | 38   | 25 | 20 | 9    | 3   | 6  | -  | 1     | 8  | 14   |
| K0348.0605101 | C    | 5  | M10x1   | 10 | 38   | 25 | 20 | 9    | 3   | 6  | -  | 1,3   | 8  | 14   |
| K0348.0606101 | C    | 6  | M10x1   | 10 | 38   | 25 | 20 | 9    | 3   | 6  | -  | 1,8   | 8  | 14   |
| K0348.060512  | C    | 5  | M12     | 12 | 46,8 | 30 | 25 | 10,8 | 3,6 | 8  | -  | 1,3   | 8  | 15   |
| K0348.060612  | C    | 6  | M12     | 12 | 46,8 | 30 | 25 | 10,8 | 3,6 | 8  | -  | 1,8   | 8  | 15   |
| K0348.060812  | C    | 8  | M12     | 12 | 46,8 | 30 | 25 | 10,8 | 3,6 | 8  | -  | 2,3   | 8  | 15   |
| K0348.0605121 | C    | 5  | M12x1,5 | 12 | 46,8 | 30 | 25 | 10,8 | 3,6 | 8  | -  | 1,3   | 8  | 15   |
| K0348.0606121 | C    | 6  | M12x1,5 | 12 | 46,8 | 30 | 25 | 10,8 | 3,6 | 8  | -  | 1,8   | 8  | 15   |
| K0348.0608121 | C    | 8  | M12x1,5 | 12 | 46,8 | 30 | 25 | 10,8 | 3,6 | 8  | -  | 2,3   | 8  | 15   |
| K0348.060616  | C    | 6  | M16     | 16 | 60,4 | 40 | 32 | 14,4 | 4,8 | 10 | -  | 1,8   | 15   | 35   |
| K0348.060816  | C    | 8  | M16     | 16 | 60,4 | 40 | 32 | 14,4 | 4,8 | 10 | -  | 2,3   | 15   | 35   |
| K0348.061016  | C    | 10 | M16     | 16 | 60,4 | 40 | 32 | 14,4 | 4,8 | 10 | -  | 2,8   | 15   | 35   |
| K0348.0606161 | C    | 6  | M16x1,5 | 16 | 60,4 | 40 | 32 | 14,4 | 4,8 | 10 | -  | 1,8   | 15   | 35   |
| K0348.0608161 | C    | 8  | M16x1,5 | 16 | 60,4 | 40 | 32 | 14,4 | 4,8 | 10 | -  | 2,3   | 15   | 35   |
| K0348.0610161 | C    | 10 | M16x1,5 | 16 | 60,4 | 40 | 32 | 14,4 | 4,8 | 10 | -  | 2,8   | 15   | 35   |
| K0348.060820  | C    | 8  | M20     | 20 | 70   | 50 | 35 | 18   | 6   | 12 | -  | 2,3   | 20   | 60   |
| K0348.061020  | C    | 10 | M20     | 20 | 70   | 50 | 35 | 18   | 6   | 12 | -  | 2,8   | 20   | 60   |
| K0348.061220  | C    | 12 | M20     | 20 | 70   | 50 | 35 | 18   | 6   | 12 | -  | 3     | 20   | 60   |
| K0348.0608201 | C    | 8  | M20x1,5 | 20 | 70   | 50 | 35 | 18   | 6   | 12 | -  | 2,3   | 20   | 60   |
| K0348.0610201 | C    | 10 | M20x1,5 | 20 | 70   | 50 | 35 | 18   | 6   | 12 | -  | 2,8   | 20   | 60   |
| K0348.0612201 | C    | 12 | M20x1,5 | 20 | 70   | 50 | 35 | 18   | 6   | 12 | -  | 3     | 20   | 60   |
| K0348.050410  | B    | 4  | M10     | 10 | 38   | 25 | 20 | 9    | 3   | 6  | 17 | 1     | 8  | 14   |
| K0348.050510  | B    | 5  | M10     | 10 | 38   | 25 | 20 | 9    | 3   | 6  | 17 | 1,3   | 8  | 14   |
| K0348.050610  | B    | 6  | M10     | 10 | 38   | 25 | 20 | 9    | 3   | 6  | 17 | 1,8   | 8  | 14   |
| K0348.0504101 | B    | 4  | M10x1   | 10 | 38   | 25 | 20 | 9    | 3   | 6  | 17 | 1     | 8  | 14   |
| K0348.0505101 | B    | 5  | M10x1   | 10 | 38   | 25 | 20 | 9    | 3   | 6  | 17 | 1,3   | 8  | 14   |
| K0348.0506101 | B    | 6  | M10x1   | 10 | 38   | 25 | 20 | 9    | 3   | 6  | 17 | 1,8   | 8  | 14   |
| K0348.050512  | B    | 5  | M12     | 12 | 46,8 | 30 | 25 | 10,8 | 3,6 | 8  | 19 | 1,3   | 8  | 15   |
| K0348.050612  | B    | 6  | M12     | 12 | 46,8 | 30 | 25 | 10,8 | 3,6 | 8  | 19 | 1,8   | 8  | 15   |
| K0348.050812  | B    | 8  | M12     | 12 | 46,8 | 30 | 25 | 10,8 | 3,6 | 8  | 19 | 2,3   | 8  | 15   |
| K0348.0505121 | B    | 5  | M12x1,5 | 12 | 46,8 | 30 | 25 | 10,8 | 3,6 | 8  | 19 | 1,3   | 8  | 15   |
| K0348.0506121 | B    | 6  | M12x1,5 | 12 | 46,8 | 30 | 25 | 10,8 | 3,6 | 8  | 19 | 1,8   | 8  | 15   |
| K0348.0508121 | B    | 8  | M12x1,5 | 12 | 46,8 | 30 | 25 | 10,8 | 3,6 | 8  | 19 | 2,3   | 8  | 15   |
| K0348.050616  | B    | 6  | M16     | 16 | 60,4 | 40 | 32 | 14,4 | 4,8 | 10 | 24 | 1,8   | 15   | 35   |
| K0348.050816  | B    | 8  | M16     | 16 | 60,4 | 40 | 32 | 14,4 | 4,8 | 10 | 24 | 2,3   | 15   | 35   |
| K0348.051016  | B    | 10 | M16     | 16 | 60,4 | 40 | 32 | 14,4 | 4,8 | 10 | 24 | 2,8   | 15   | 35   |
| K0348.0506161 | B    | 6  | M16x1,5 | 16 | 60,4 | 40 | 32 | 14,4 | 4,8 | 10 | 24 | 1,8   | 15   | 35   |
| K0348.0508161 | B    | 8  | M16x1,5 | 16 | 60,4 | 40 | 32 | 14,4 | 4,8 | 10 | 24 | 2,3   | 15   | 35   |
| K0348.0510161 | B    | 10 | M16x1,5 | 16 | 60,4 | 40 | 32 | 14,4 | 4,8 | 10 | 24 | 2,8   | 15   | 35   |
| K0348.050820  | B    | 8  | M20     | 20 | 70   | 50 | 35 | 18   | 6   | 12 | 30 | 2,3   | 20   | 60   |

## Cam-action indexing plungers

### Overview of items

| Order No.     | Form | D  | D1      | D2 | L    | L1 | L3 | B    | B1  | H  | SW | Fx30° | Spring force<br>initial pressure<br>F1 approx. N | Spring force<br>final pressure<br>F2 approx. N |
|---------------|------|----|---------|----|------|----|----|------|-----|----|----|-------|--|--|
| K0348.051020  | B    | 10 | M20     | 20 | 70   | 50 | 35 | 18   | 6   | 12 | 30 | 2,8   | 20   | 60   |
| K0348.051220  | B    | 12 | M20     | 20 | 70   | 50 | 35 | 18   | 6   | 12 | 30 | 3     | 20   | 60   |
| K0348.0508201 | B    | 8  | M20x1,5 | 20 | 70   | 50 | 35 | 18   | 6   | 12 | 30 | 2,3   | 20   | 60   |
| K0348.0510201 | B    | 10 | M20x1,5 | 20 | 70   | 50 | 35 | 18   | 6   | 12 | 30 | 2,8   | 20   | 60   |
| K0348.0512201 | B    | 12 | M20x1,5 | 20 | 70   | 50 | 35 | 18   | 6   | 12 | 30 | 3     | 20   | 60   |
| K0348.070410  | D    | 4  | M10     | 10 | 38   | 25 | 20 | 9    | 3   | 6  | 17 | 1     | 8  | 14   |
| K0348.070510  | D    | 5  | M10     | 10 | 38   | 25 | 20 | 9    | 3   | 6  | 17 | 1,3   | 8  | 14   |
| K0348.070610  | D    | 6  | M10     | 10 | 38   | 25 | 20 | 9    | 3   | 6  | 17 | 1,8   | 8  | 14   |
| K0348.0704101 | D    | 4  | M10x1   | 10 | 38   | 25 | 20 | 9    | 3   | 6  | 17 | 1     | 8  | 14   |
| K0348.0705101 | D    | 5  | M10x1   | 10 | 38   | 25 | 20 | 9    | 3   | 6  | 17 | 1,3   | 8  | 14   |
| K0348.0706101 | D    | 6  | M10x1   | 10 | 38   | 25 | 20 | 9    | 3   | 6  | 17 | 1,8   | 8  | 14   |
| K0348.070512  | D    | 5  | M12     | 12 | 46,8 | 30 | 25 | 10,8 | 3,6 | 8  | 19 | 1,3   | 8  | 15   |
| K0348.070612  | D    | 6  | M12     | 12 | 46,8 | 30 | 25 | 10,8 | 3,6 | 8  | 19 | 1,8   | 8  | 15   |
| K0348.070812  | D    | 8  | M12     | 12 | 46,8 | 30 | 25 | 10,8 | 3,6 | 8  | 19 | 2,3   | 8  | 15   |
| K0348.0705121 | D    | 5  | M12x1,5 | 12 | 46,8 | 30 | 25 | 10,8 | 3,6 | 8  | 19 | 1,3   | 8  | 15   |
| K0348.0706121 | D    | 6  | M12x1,5 | 12 | 46,8 | 30 | 25 | 10,8 | 3,6 | 8  | 19 | 1,8   | 8  | 15   |
| K0348.0708121 | D    | 8  | M12x1,5 | 12 | 46,8 | 30 | 25 | 10,8 | 3,6 | 8  | 19 | 2,3   | 8  | 15   |
| K0348.070616  | D    | 6  | M16     | 16 | 60,4 | 40 | 32 | 14,4 | 4,8 | 10 | 24 | 1,8   | 15   | 35   |
| K0348.070816  | D    | 8  | M16     | 16 | 60,4 | 40 | 32 | 14,4 | 4,8 | 10 | 24 | 2,3   | 15   | 35   |
| K0348.071016  | D    | 10 | M16     | 16 | 60,4 | 40 | 32 | 14,4 | 4,8 | 10 | 24 | 2,8   | 15   | 35   |
| K0348.0706161 | D    | 6  | M16x1,5 | 16 | 60,4 | 40 | 32 | 14,4 | 4,8 | 10 | 24 | 1,8   | 15   | 35   |
| K0348.0708161 | D    | 8  | M16x1,5 | 16 | 60,4 | 40 | 32 | 14,4 | 4,8 | 10 | 24 | 2,3   | 15   | 35   |
| K0348.0710161 | D    | 10 | M16x1,5 | 16 | 60,4 | 40 | 32 | 14,4 | 4,8 | 10 | 24 | 2,8   | 15   | 35   |
| K0348.070820  | D    | 8  | M20     | 20 | 70   | 50 | 35 | 18   | 6   | 12 | 30 | 2,3   | 20   | 60   |
| K0348.071020  | D    | 10 | M20     | 20 | 70   | 50 | 35 | 18   | 6   | 12 | 30 | 2,8   | 20   | 60   |
| K0348.071220  | D    | 12 | M20     | 20 | 70   | 50 | 35 | 18   | 6   | 12 | 30 | 3     | 20   | 60   |
| K0348.0708201 | D    | 8  | M20x1,5 | 20 | 70   | 50 | 35 | 18   | 6   | 12 | 30 | 2,3   | 20   | 60   |
| K0348.0710201 | D    | 10 | M20x1,5 | 20 | 70   | 50 | 35 | 18   | 6   | 12 | 30 | 2,8   | 20   | 60   |
| K0348.0712201 | D    | 12 | M20x1,5 | 20 | 70   | 50 | 35 | 18   | 6   | 12 | 30 | 3     | 20   | 60   |