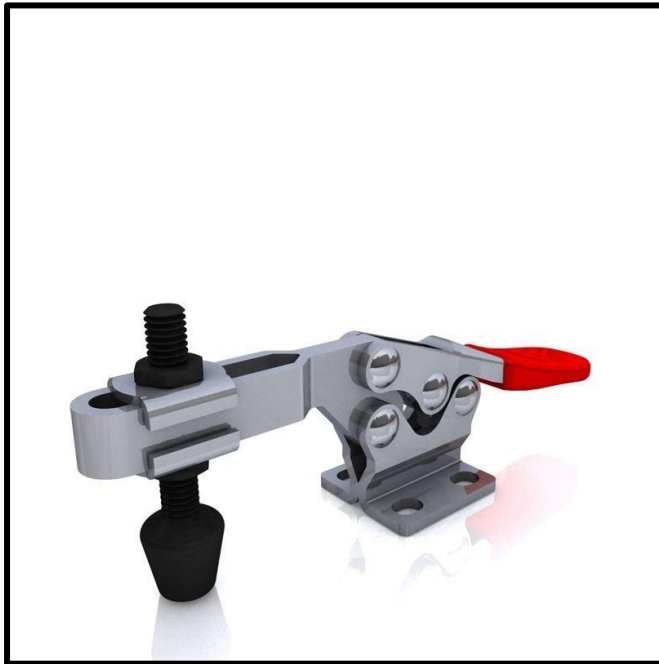


# Horizontal Toggle Clamp

Part No. GH-225-D



## Product Description

Horizontal Toggle Clamp Flat  
Base Slotted Arm Size 227daN

## Key Features

Overall Height:	47.6mm
Underarm Height:	34.9mm
Arm Length	71.6mm
Holding Force	227daN

## Other Features

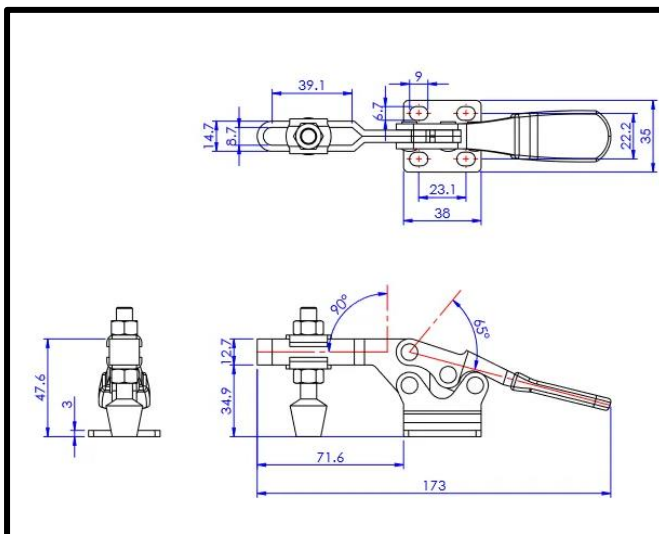
Arm Opens:	90°
Handle Opens:	65°
Weight:	0.26Kg

## Material

Toggle Clamp:	Zinc Plated Mild Steel
Spindle:	Neoprene Tipped
Handle:	Zinc Plated Mild Steel uPVC

## Whats In The Bag?

Toggle Clamp:	GH-225-D
Spindle:	FC-086312
2x Flanged Washers	FW-516



[goodhanduk.co.uk](http://goodhanduk.co.uk)

01908 221 151