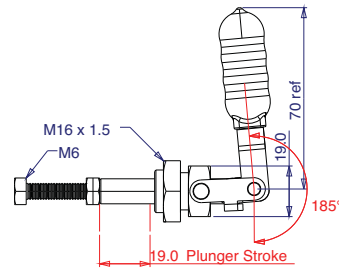
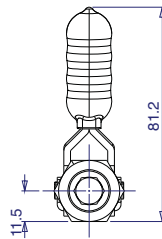
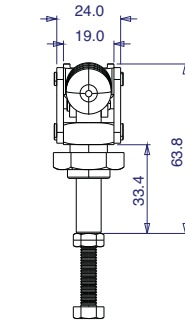
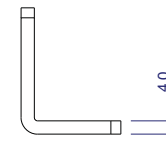
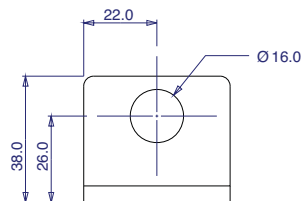
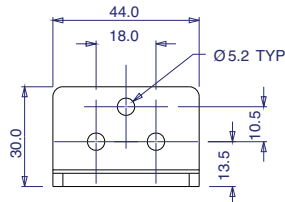


## ► Nose Mounted

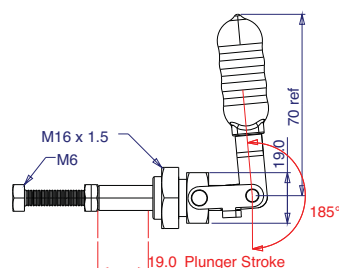
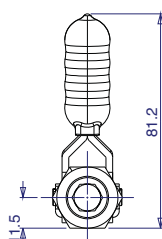
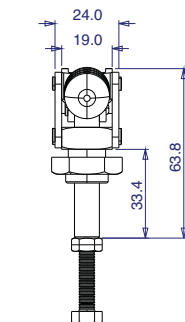


<b>Part No:</b>	<b>GH-36202M</b>
Holding Force:	91Kg
Plunger Stroke:	19mm
Weight:	0.113Kg
Spindle Supplied:	SA-064010
Optional Bracket:	GH-36203
Locknut Supplied:	M16 x 1.5



<b>Part No:</b>	<b>GH-36203</b>
Bracket to suit:	GH-36202M
Finish:	Zinc plated

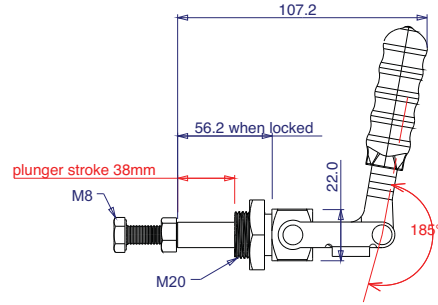
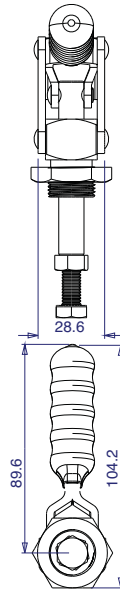
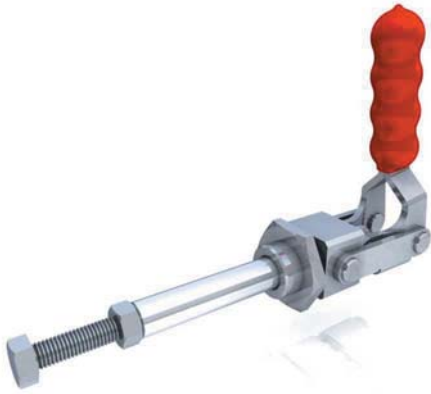
stainless



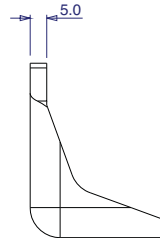
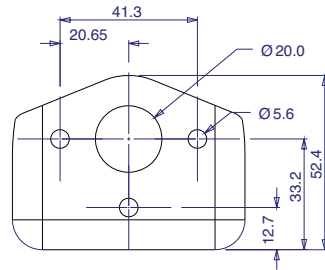
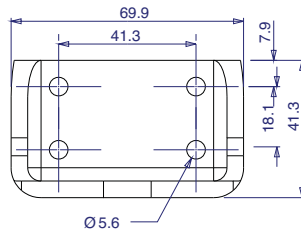
<b>Part No:</b>	<b>GH-36202-MSS</b>
Holding Force:	91Kg
Plunger Stroke:	19mm
Weight:	0.113Kg
Spindle Supplied:	SA-064010-SS
Optional Bracket:	-
Locknut Supplied:	M16 x 1.5



► Nose Mounted

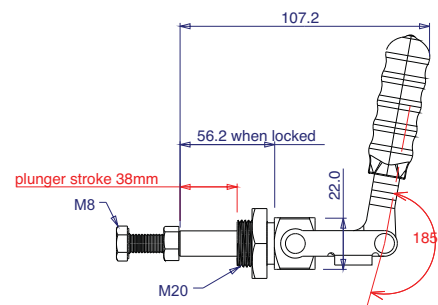
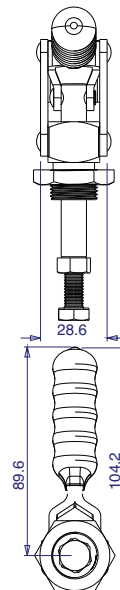


<b>Part No:</b>	<b>GH-36204M</b>
Holding Force:	136Kg
Plunger Stroke:	38mm
Weight:	0.27Kg
Spindle Supplied:	SA-085012
Optional Bracket:	GH-36205
Locknut Supplied:	M20 x 1.5



<b>Part No:</b>	<b>GH-36205</b>
Bracket to suit:	GH-36204M
Finish:	Zinc plated

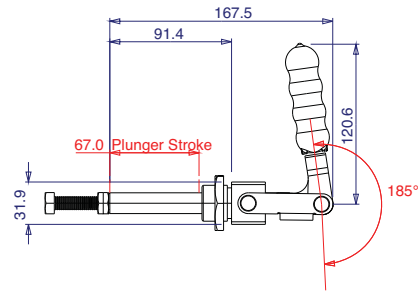
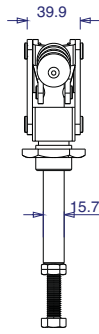
stainless



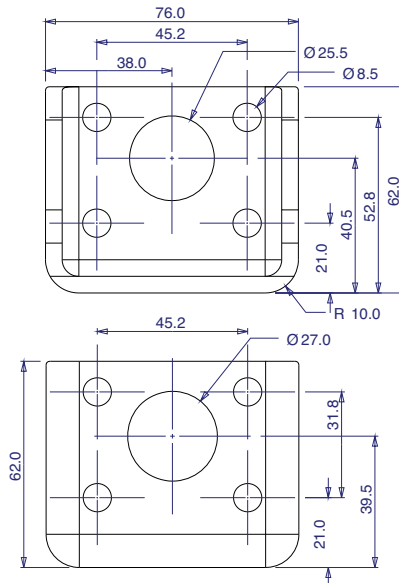
<b>Part No:</b>	<b>GH-36204-MSS</b>
Holding Force:	136Kg
Plunger Stroke:	38mm
Weight:	0.27Kg
Spindle Supplied:	SA-085012-SS
Optional Bracket:	-
Locknut Supplied:	M20 x 1.5



## ▶ Nose Mounted

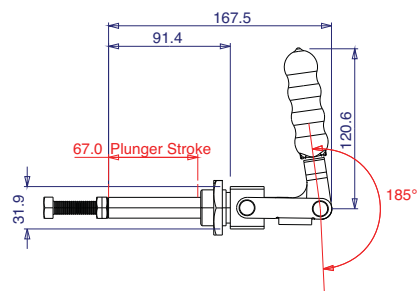
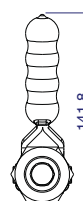
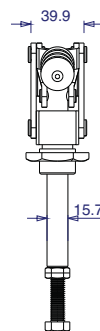


<b>Part No:</b>	<b>GH-36224M</b>
Holding Force:	318Kg
Plunger Stroke:	66.8mm
Weight:	0.69Kg
Spindle Supplied:	SA-105015
Optional Bracket:	GH-36225
Locknut Supplied:	M27 x 1.5



<b>Part No:</b>	<b>GH-36225</b>
Bracket to suit:	GH-36224M
Finish:	Zinc plated

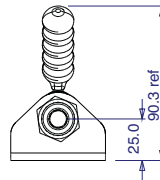
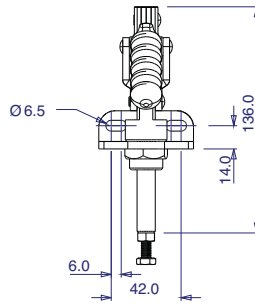
stainless



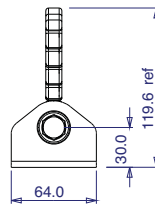
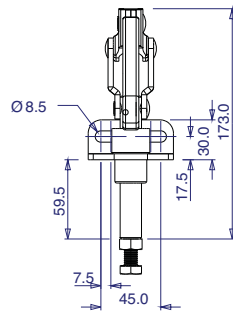
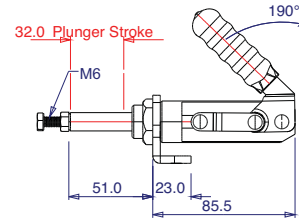
<b>Part No:</b>	<b>GH-36224-MSS</b>
Holding Force:	318Kg
Plunger Stroke:	66.8mm
Weight:	0.69Kg
Spindle Supplied:	SA-105015-SS
Optional Bracket:	-
Locknut Supplied:	M27 x 1.5



► Nose Mounted



<b>Part No:</b>	<b>GH-30250M</b>
Holding Force:	250Kg
Plunger Stroke:	32mm
Handle Opens:	190°
Weight:	0.385Kg
Spindle Supplied:	SA-062010
Threaded Collar	M20 x 1.5



<b>Part No:</b>	<b>GH-30450M</b>
Holding Force:	450Kg
Plunger Stroke:	38mm
Handle Opens:	185°
Weight:	0.774Kg
Spindle Supplied:	SA-103015
Threaded Collar	M24 x 1.5

