

Horizontal Toggle Clamp

Part No. GH-201-L



Product Description

Horizontal Toggle Clamp Left
Hand Base Slotted Arm Size 27daN

Key Features

Overall Height:	18.7mm
Underarm Height:	9.2mm
Arm Length:	20.5mm
Holding Force:	27daN

Other Features

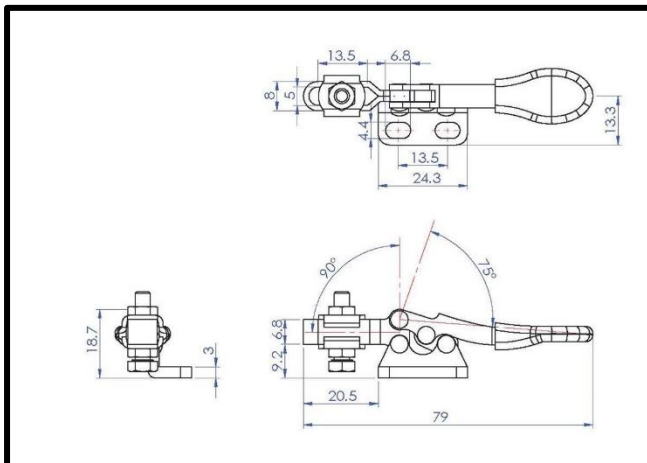
Arm Opens:	90°
Handle Opens:	75°
Weight:	0.03Kg

Material

Toggle Clamp:	Zinc Plated Mild Steel
Spindle:	Nylon
Handle:	uPVC

Whats In The Bag?

Toggle Clamp:	GH-201-L
Spindle:	SA-08034
2x Flanged Washers:	FW-080



goodhanduk.co.uk

01908 221 151