

## T-slot bolts DIN 787

### Item description/product images



### Description

**Material:**

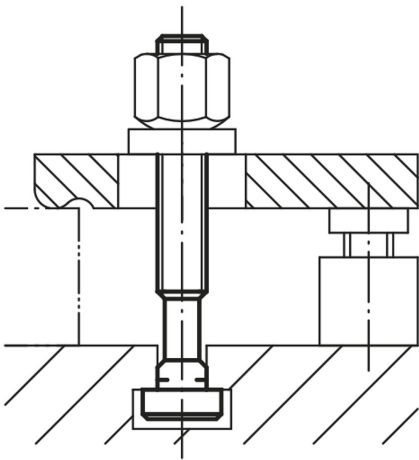
Carbon steel.

**Version:**

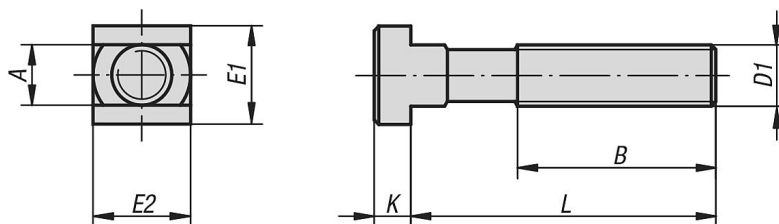
Forged and milled, rolled thread.

M6-M12 tempered to 10.9, black.

M14-M36 tempered to 8.8, black.



### Drawings



### Overview of items

#### T-slot bolts DIN 787

## T-slot bolts DIN 787

## Overview of items

| Order No.    | Nominal slot size | D1  | L   | A    | B   | E1/E2 | K  |
|--------------|-------------------|-----|-----|------|-----|-------|----|
| K0698.0625   | 6                 | M6  | 25  | 5,7  | 15  | 10    | 4  |
| K0698.0640   | 6                 | M6  | 40  | 5,7  | 28  | 10    | 4  |
| K0698.0663   | 6                 | M6  | 63  | 5,7  | 40  | 10    | 4  |
| K0698.0832   | 8                 | M8  | 32  | 7,7  | 22  | 13    | 6  |
| K0698.0850   | 8                 | M8  | 50  | 7,7  | 35  | 13    | 6  |
| K0698.0880   | 8                 | M8  | 80  | 7,7  | 50  | 13    | 6  |
| K0698.1040   | 10                | M10 | 40  | 9,7  | 30  | 15    | 6  |
| K0698.1063   | 10                | M10 | 63  | 9,7  | 45  | 15    | 6  |
| K0698.10100  | 10                | M10 | 100 | 9,7  | 60  | 15    | 6  |
| K0698.1250   | 12                | M12 | 50  | 11,7 | 35  | 18    | 7  |
| K0698.1263   | 12                | M12 | 63  | 11,7 | 40  | 18    | 7  |
| K0698.1280   | 12                | M12 | 80  | 11,7 | 55  | 18    | 7  |
| K0698.12100  | 12                | M12 | 100 | 11,7 | 65  | 18    | 7  |
| K0698.12125  | 12                | M12 | 125 | 11,7 | 75  | 18    | 7  |
| K0698.12160  | 12                | M12 | 160 | 11,7 | 100 | 18    | 7  |
| K0698.12200  | 12                | M12 | 200 | 11,7 | 120 | 18    | 7  |
| K0698.1450   | 14                | M12 | 50  | 13,7 | 35  | 22    | 8  |
| K0698.1463   | 14                | M12 | 63  | 13,7 | 45  | 22    | 8  |
| K0698.1480   | 14                | M12 | 80  | 13,7 | 55  | 22    | 8  |
| K0698.14100  | 14                | M12 | 100 | 13,7 | 65  | 22    | 8  |
| K0698.14125  | 14                | M12 | 125 | 13,7 | 75  | 22    | 8  |
| K0698.14160  | 14                | M12 | 160 | 13,7 | 100 | 22    | 8  |
| K0698.14200  | 14                | M12 | 200 | 13,7 | 120 | 22    | 8  |
| K0698.16631  | 16                | M14 | 63  | 15,7 | 45  | 25    | 9  |
| K0698.16801  | 16                | M14 | 80  | 15,7 | 55  | 25    | 9  |
| K0698.161001 | 16                | M14 | 100 | 15,7 | 65  | 25    | 9  |
| K0698.161251 | 16                | M14 | 125 | 15,7 | 75  | 25    | 9  |
| K0698.161601 | 16                | M14 | 160 | 15,7 | 100 | 25    | 9  |
| K0698.162501 | 16                | M14 | 250 | 15,7 | 150 | 25    | 9  |
| K0698.1663   | 16                | M16 | 63  | 15,7 | 45  | 25    | 9  |
| K0698.1680   | 16                | M16 | 80  | 15,7 | 55  | 25    | 9  |
| K0698.16100  | 16                | M16 | 100 | 15,7 | 65  | 25    | 9  |
| K0698.16125  | 16                | M16 | 125 | 15,7 | 85  | 25    | 9  |
| K0698.16160  | 16                | M16 | 160 | 15,7 | 100 | 25    | 9  |
| K0698.16200  | 16                | M16 | 200 | 15,7 | 125 | 25    | 9  |
| K0698.16250  | 16                | M16 | 250 | 15,7 | 150 | 25    | 9  |
| K0698.1863   | 18                | M16 | 63  | 17,7 | 45  | 28    | 10 |
| K0698.1880   | 18                | M16 | 80  | 17,7 | 55  | 28    | 10 |
| K0698.18100  | 18                | M16 | 100 | 17,7 | 65  | 28    | 10 |
| K0698.18125  | 18                | M16 | 125 | 17,7 | 85  | 28    | 10 |
| K0698.18160  | 18                | M16 | 160 | 17,7 | 100 | 28    | 10 |
| K0698.18200  | 18                | M16 | 200 | 17,7 | 125 | 28    | 10 |
| K0698.18250  | 18                | M16 | 250 | 17,7 | 150 | 28    | 10 |
| K0698.2080   | 20                | M20 | 80  | 19,7 | 55  | 32    | 12 |
| K0698.20100  | 20                | M20 | 100 | 19,7 | 65  | 32    | 12 |
| K0698.20125  | 20                | M20 | 125 | 19,7 | 85  | 32    | 12 |
| K0698.20160  | 20                | M20 | 160 | 19,7 | 110 | 32    | 12 |
| K0698.20200  | 20                | M20 | 200 | 19,7 | 125 | 32    | 12 |
| K0698.20250  | 20                | M20 | 250 | 19,7 | 150 | 32    | 12 |
| K0698.20315  | 20                | M20 | 315 | 19,7 | 190 | 32    | 12 |
| K0698.2280   | 22                | M20 | 80  | 21,7 | 55  | 35    | 14 |
| K0698.22100  | 22                | M20 | 100 | 21,7 | 65  | 35    | 14 |
| K0698.22125  | 22                | M20 | 125 | 21,7 | 85  | 35    | 14 |
| K0698.22160  | 22                | M20 | 160 | 21,7 | 110 | 35    | 14 |
| K0698.22200  | 22                | M20 | 200 | 21,7 | 125 | 35    | 14 |
| K0698.22250  | 22                | M20 | 250 | 21,7 | 150 | 35    | 14 |
| K0698.22315  | 22                | M20 | 315 | 21,7 | 190 | 35    | 14 |
| K0698.24100  | 24                | M24 | 100 | 23,7 | 70  | 40    | 16 |
| K0698.24125  | 24                | M24 | 125 | 23,7 | 85  | 40    | 16 |
| K0698.24160  | 24                | M24 | 160 | 23,7 | 110 | 40    | 16 |
| K0698.24200  | 24                | M24 | 200 | 23,7 | 125 | 40    | 16 |
| K0698.24250  | 24                | M24 | 250 | 23,7 | 150 | 40    | 16 |

## T-slot bolts DIN 787

### Overview of items

| Order No.   | Nominal slot size | D1  | L   | A    | B   | E1/E2 | K  |
|-------------|-------------------|-----|-----|------|-----|-------|----|
| K0698.24315 | 24                | M24 | 315 | 23,7 | 190 | 40    | 16 |
| K0698.24400 | 24                | M24 | 400 | 23,7 | 240 | 40    | 16 |
| K0698.28100 | 28                | M24 | 100 | 27,7 | 70  | 44    | 18 |
| K0698.28125 | 28                | M24 | 125 | 27,7 | 85  | 44    | 18 |
| K0698.28160 | 28                | M24 | 160 | 27,7 | 110 | 44    | 18 |
| K0698.28200 | 28                | M24 | 200 | 27,7 | 125 | 44    | 18 |
| K0698.28250 | 28                | M24 | 250 | 27,7 | 150 | 44    | 18 |
| K0698.28315 | 28                | M24 | 315 | 27,7 | 190 | 44    | 18 |
| K0698.28400 | 28                | M24 | 400 | 27,7 | 240 | 44    | 18 |
| K0698.36125 | 36                | M30 | 125 | 35,6 | 80  | 54    | 22 |
| K0698.36160 | 36                | M30 | 160 | 35,6 | 110 | 54    | 22 |
| K0698.36200 | 36                | M30 | 200 | 35,6 | 135 | 54    | 22 |
| K0698.36250 | 36                | M30 | 250 | 35,6 | 150 | 54    | 22 |
| K0698.36315 | 36                | M30 | 315 | 35,6 | 200 | 54    | 22 |
| K0698.36500 | 36                | M30 | 500 | 35,6 | 300 | 54    | 22 |
| K0698.42160 | 42                | M36 | 160 | 41,6 | 100 | 65    | 26 |
| K0698.42250 | 42                | M36 | 250 | 41,6 | 175 | 65    | 26 |
| K0698.42400 | 42                | M36 | 400 | 41,6 | 250 | 65    | 26 |