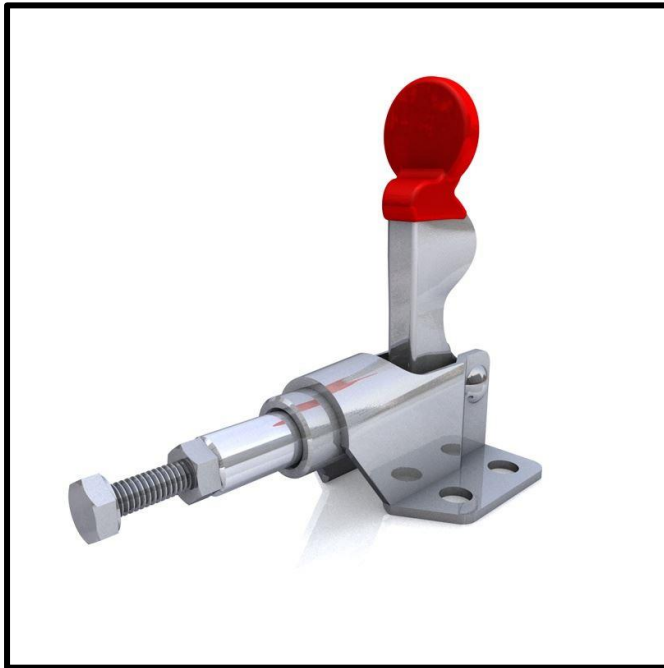


# Push-Pull Toggle Clamp

Part No. GH-36006

**GH GoodHand UK**



## Product Description

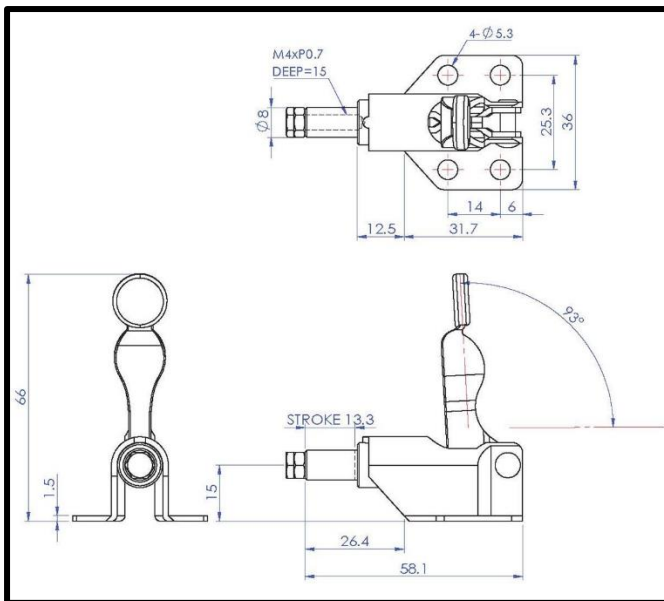
Push Pull Toggle Clamp Plunger  
Stroke 11mm Size 50Kg

## Key Features

Overall Height: 66mm  
Length: 58.1mm  
Stroke: 13.3mm  
Holding Force: 50Kg

## Other Features

Arm Opens: 93°  
Weight: 0.06Kg



## Material

Clamp: Zinc Plated Mild Steel  
Spindle: Zinc Plated Mild Steel  
Handle: uPVC

## What's In The Bag?

GH-36006: Toggle Clamp  
SA-041507: M4x15 Zinc Plated Steel Spindle  
With Nut

**GH GoodHand UK**

[goodhanduk.co.uk](http://goodhanduk.co.uk)

01908 221 151