

Vertical Toggle Clamp

Part No. GH-11421-SS



Product Description

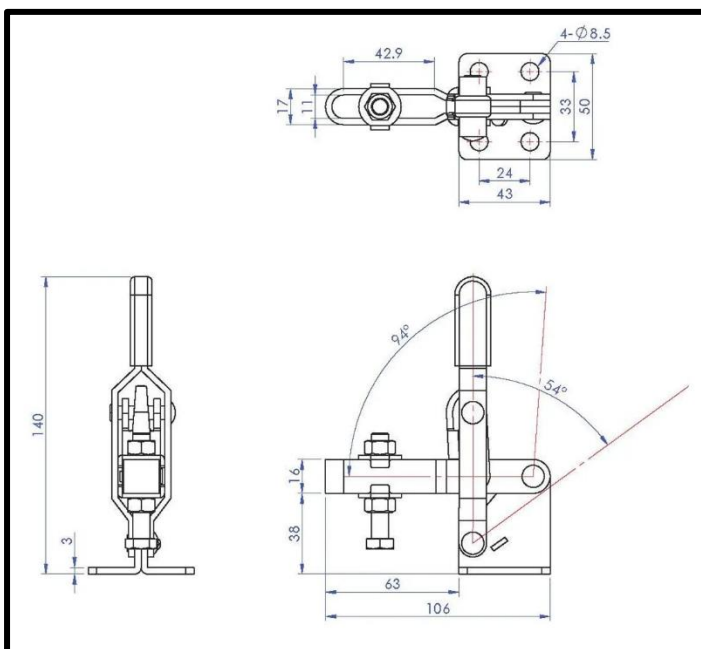
Stainless Steel Vertical Toggle Clamp Flat Base Size 200daN

Key Features

Overall Height: 140mm
Underarm Height: 38mm
Arm Length: 63mm
Holding Force: 200daN

Other Features

Arm Opens: 94°
Handle Opens: 54°
Weight: 0.366Kg



Material

Toggle Clamp: 304 Stainless Steel
Spindle: 304 Stainless Steel
Handle: uPVC

What's In The Bag?

GH-11421-SS: Toggle Clamp
FW-380-SS: 2x Flanged Washers for M8 Spindle
SA-085012-SS: M8x50mm Stainless Spindle With Nuts



goodhanduk.co.uk

01908 221 151