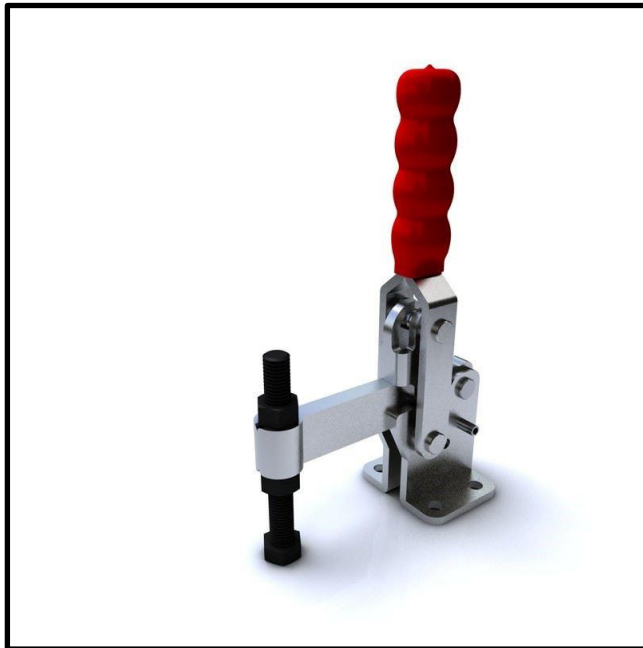


Vertical Toggle Clamp

Part No. GH-14502-C



Product Description

Vertical Toggle Clamp Flat Base
Fixed Arm Size 450Kg

Key Features

Overall Height: 226mm
Underarm Height: 51mm
Arm Length: 74mm
Holding Force: 450Kg

Other Features

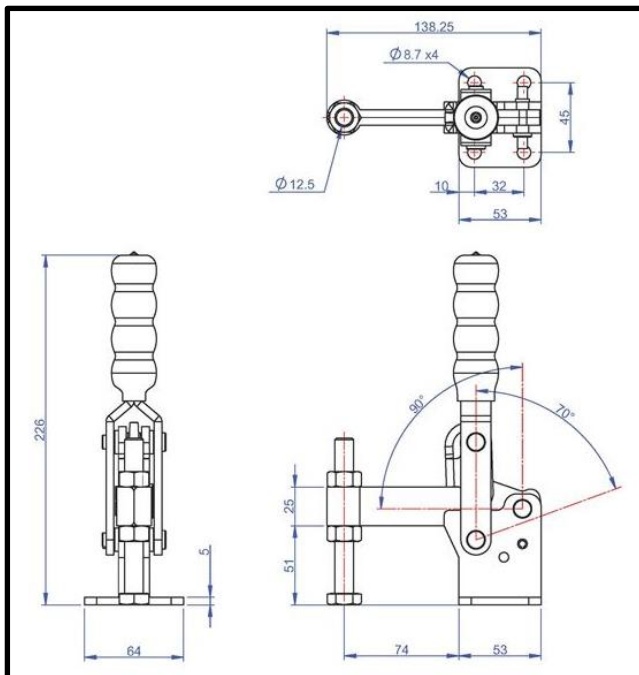
Arm Opens: 90°
Handle Opens: 70°
Weight: 1.2Kg

Material

Clamp: Zinc Plated Mild Steel
Spindle: Zinc Plated Mild Steel
Handle: uPVC

What's In The Bag?

GH-14502-C: Toggle Clamp
SA-121017: M12x100mm Zinc Plated Steel
Spindle With Nuts



goodhanduk.co.uk

01908 221 151