

Vertical Toggle Clamp

Part No. GH-12205



Product Description

Vertical Toggle Clamp Flat Base
Slotted Arm Size 182Kg

Key Features

Overall Height: 206mm
Underarm Height: 50.8mm
Arm Length: 106.3mm
Holding Force: 182Kg

Other Features

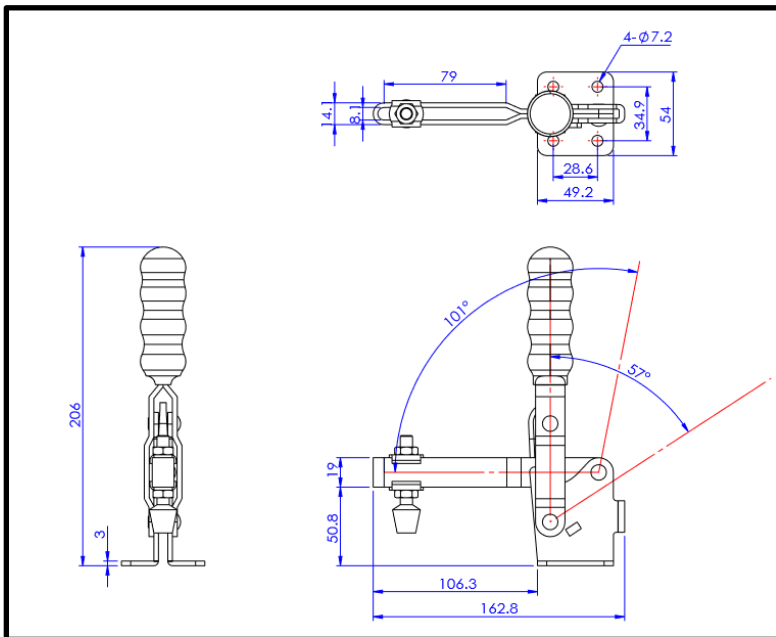
Arm Opens: 101°
Handle Opens: 57°
Weight: 0.62Kg

Material

Clamp: Zinc Plated Mild Steel
Spindle: Neoprene Tipped Steel
Handle: uPVC

What's In The Bag?

GH-12205: Toggle Clamp
2x FW-516: Flanged Washers For 8mm Spindle
FC-086312: M8x63mm Neoprene Tipped
Spindle With Nuts



goodhanduk.co.uk

01908 221 151