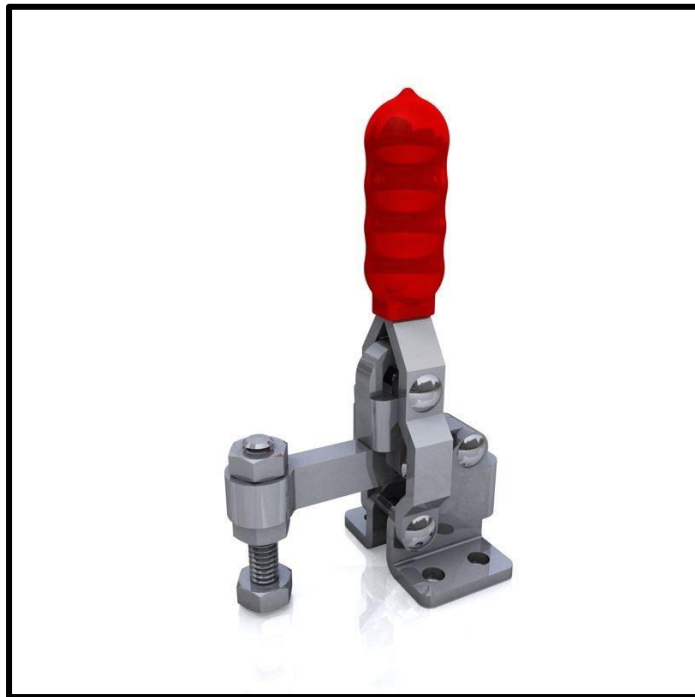


# Vertical Toggle Clamp

Part No. GH-12050-SS



## Product Description

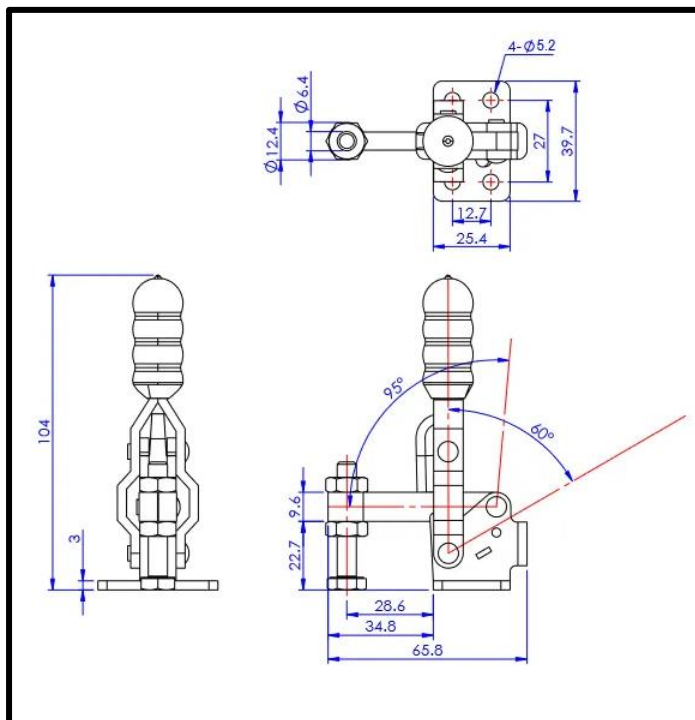
Stainless Steel Vertical Toggle Clamp Flat Base Size 91daN

## Key Features

Overall Height:	104mm
Underarm Height:	22.7mm
Arm Length:	34.8mm
Holding Force:	91daN

## Other Features

Arm Opens:	95°
Handle Opens:	60°
Weight:	0.17Kg



## Material

Toggle Clamp:	304 Stainless Steel
Spindle:	304 Stainless Steel
Handle:	uPVC

## What's In The Bag?

GH-112050-SS:	Toggle Clamp
SA-064010-SS:	M6x30mm Stainless Spindle With Nuts

Vertical Toggle Clamp  
Part No. GH-12050-SS

