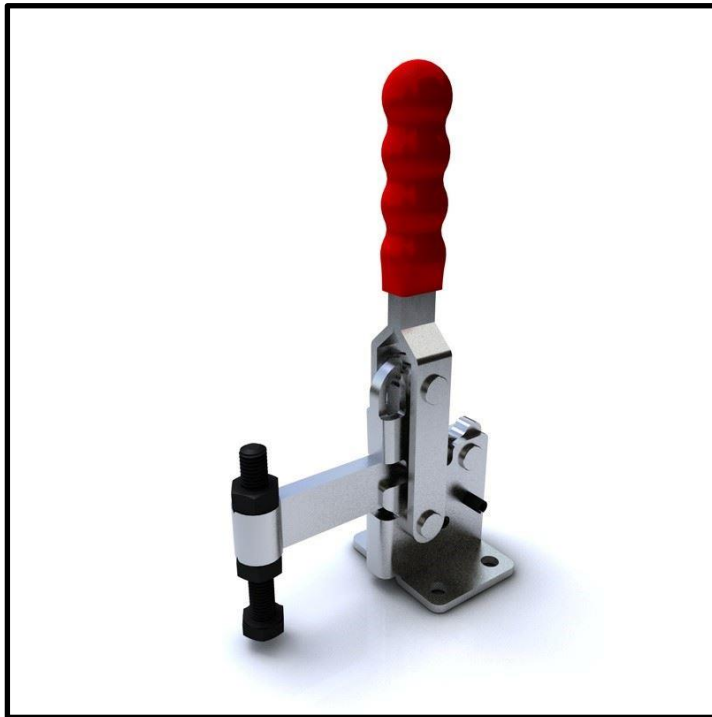


Vertical Toggle Clamp

Part No. GH-13502-C



Product Description

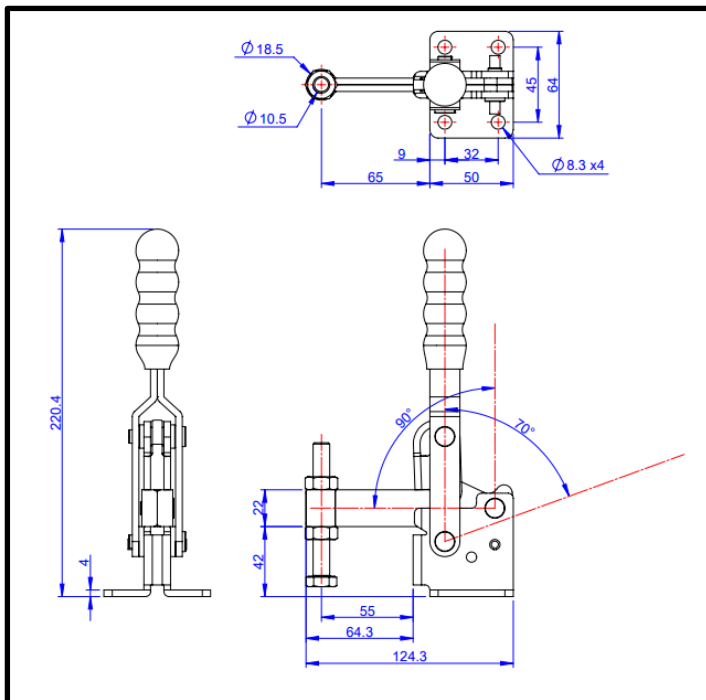
Vertical Toggle Clamp Flat Base
Fixed Arm Size 350Kg

Key Features

Overall Height: 220.4mm
Underarm Height: 42mm
Arm Length: 55mm
Holding Force: 350Kg

Other Features

Arm Opens: 90°
Handle Opens: 70°
Weight: 0.56Kg



Material

Clamp: Zinc Plated Mild Steel
Spindle: Zinc Plated Mild Steel
Handle: uPVC

What's In The Bag?

GH-13502-C: Toggle Clamp
SA-108015: M10x85mm Zinc Plated Steel Spindle
With Nuts



goodhanduk.co.uk

01908 221 151

Vertical Toggle Clamp
Part No. GH-13502-C

