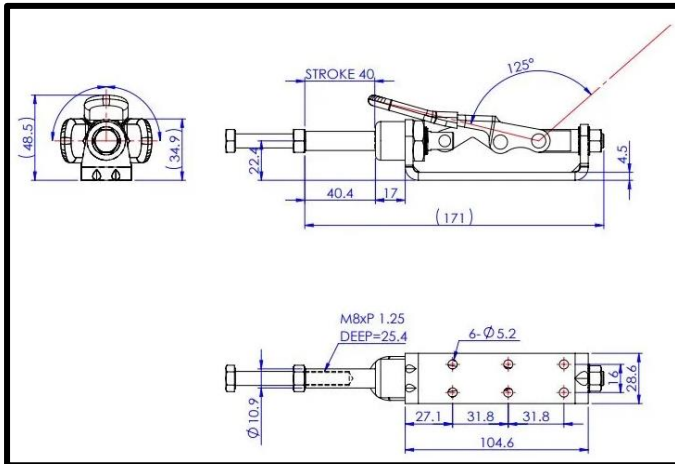
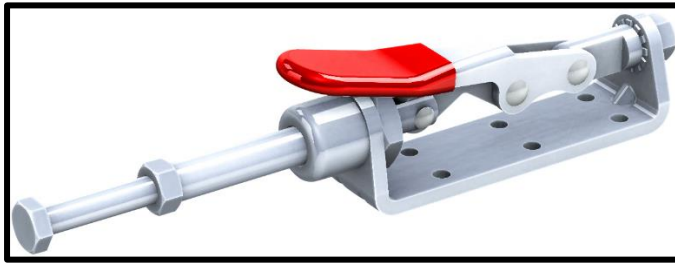


Push-Pull Toggle Clamp

Part No. GH-30606M



Product Description

Push Pull Toggle Clamp Plunger
Stroke 40mm Size 200daN

Key Features

Overall Height: 48.5mm
Length: 171mm
Stroke: 40mm
Holding Force: 200daN

Other Features

Arm Opens: 125°
Weight: 0.37Kg

Material

Clamp: Zinc Plated Mild Steel
Stopper: Zinc Plated Mild Steel
Handle: uPVC

What's In The Bag?

GH-30606M: Toggle Clamp
SA-086512: Zinc Plated Steel Spindle



goodhanduk.co.uk

01908 221 151