

# Vertical Toggle Clamp

Part No. GH-101-A



## Product Description

Vertical Toggle Clamp Flat Base  
Slotted Arm Size 50Kg

## Key Features

Overall Height: 74.4mm  
Underarm Height: 16mm  
Arm Length: 24.6mm  
Holding Force: 50Kg

## Other Features

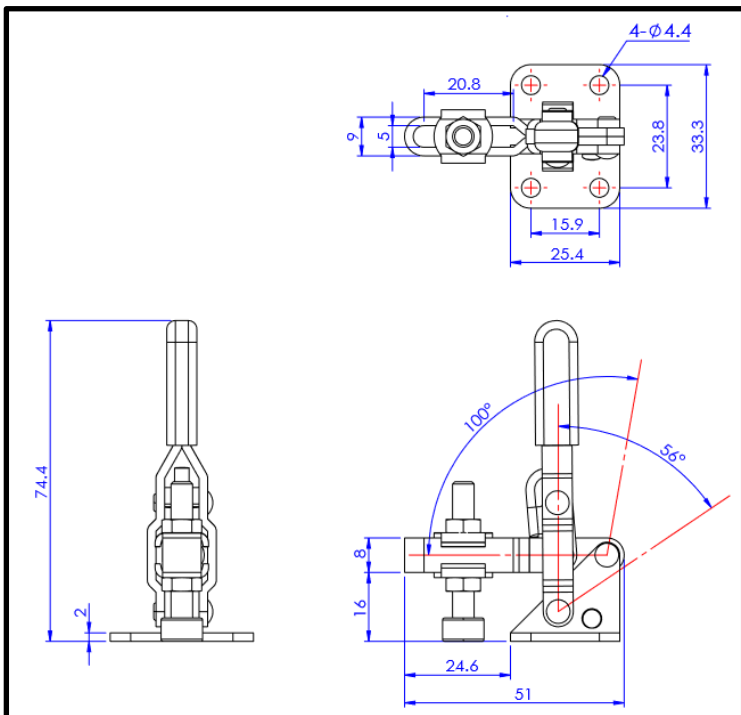
Arm Opens: 100°  
Handle Opens: 56°  
Weight: 0.06Kg

## Material

Clamp: Zinc Plated Mild Steel  
Spindle: Neoprene Tipped Steel  
Handle: uPVC

## What's In The Bag?

GH-101-A: Toggle Clamp  
2x FW-100: Flanged Washers For 5mm Spindle  
FC-053708-LP: M5x37mm Neoprene Tipped  
Spindle With Nuts



[goodhanduk.co.uk](http://goodhanduk.co.uk)

01908 221 151