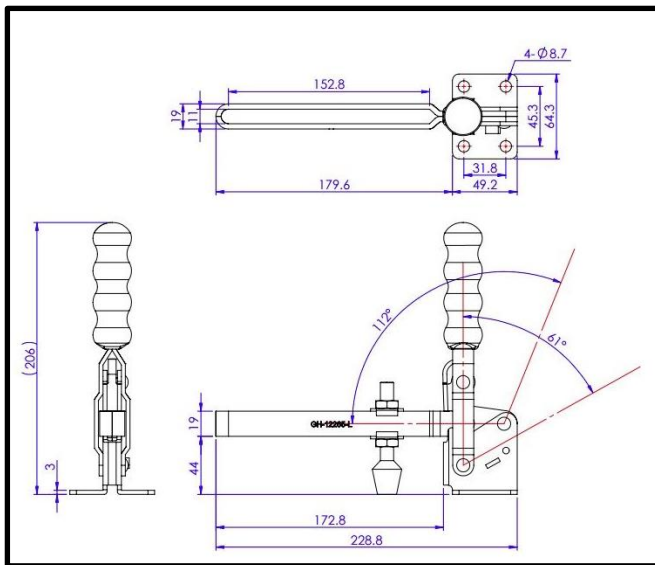


# Vertical Toggle Clamp

Part No. GH-12265-L



## Product Description

Vertical Toggle Clamp Flat Base  
Slotted Arm Size 110Kg

## Key Features

Overall Height: 110mm  
Underarm Height: 44mm  
Arm Length: 172.8mm  
Holding Force: 110Kg

## Other Features

Arm Opens: 112°  
Handle Opens: 61°  
Weight: 0.78Kg

## Material

Clamp: Zinc Plated Mild Steel  
Spindle: Neoprene Tipped Steel  
Handle: uPVC

## What's In The Bag?

GH-12265-L: Toggle Clamp  
2x FW-380: Flanged Washers For 10mm Spindle  
FC-108515: M10x85mm Neoprene Tipped Steel  
Spindle With Nuts



[goodhanduk.co.uk](http://goodhanduk.co.uk)

01908 221 151