

Vertical Toggle Clamp

Part No. GH-12502-C



Product Description

Vertical Toggle Clamp Flat Base
Fixed Arm Size 250Kg

Key Features

Overall Height: 178mm
Underarm Height: 32mm
Arm Length: 40mm
Holding Force: 250Kg

Other Features

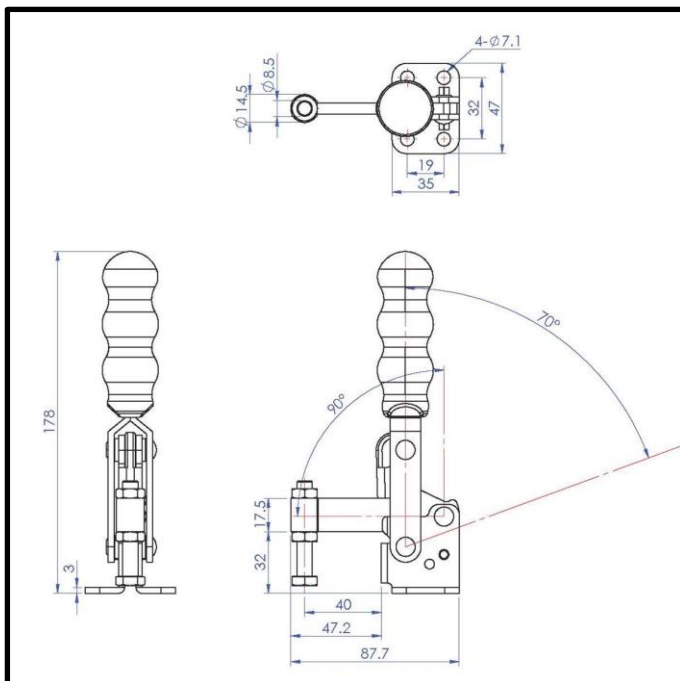
Arm Opens: 90°
Handle Opens: 70°
Weight: 0.429Kg

Material

Clamp: Zinc Plated Mild Steel
Spindle: Zinc Plated Mild Steel
Handle: uPVC
Neoprene Cap: Neoprene

What's In The Bag?

GH-12502-C: Toggle Clamp
SA-086512: M8x65mm Zinc Plated Steel Spindle
With Nuts
NC-08: Neoprene Cap for 8mm Spindle



goodhanduk.co.uk

01908 221 151