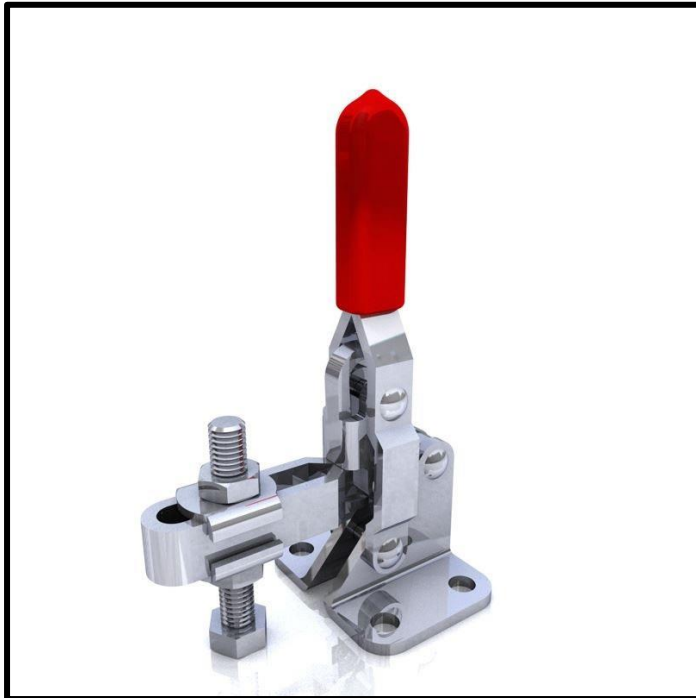


# Vertical Toggle Clamp

Part No. GH-101-ASS



## Product Description

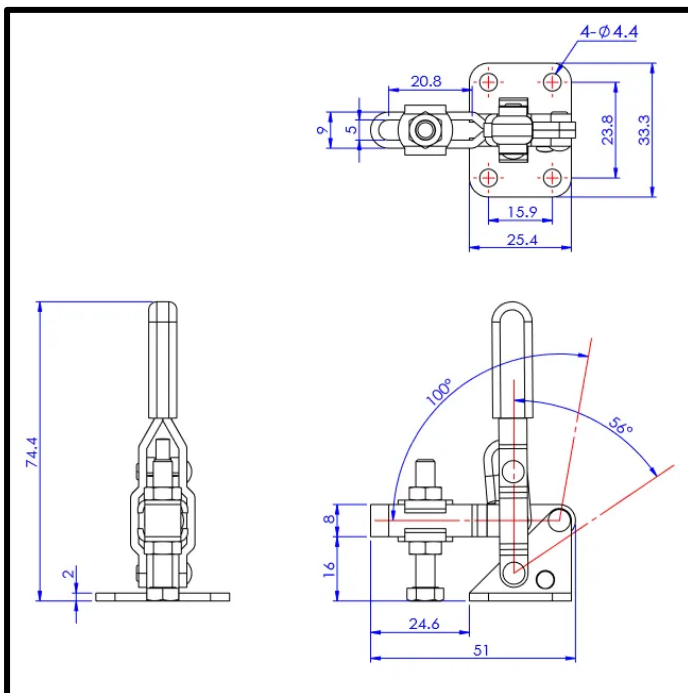
Stainless Steel Vertical Toggle Clamp Flat Base Size 50daN

## Key Features

Overall Height:	74.4mm
Underarm Height:	16mm
Arm Length:	24.6mm
Holding Force:	50daN

## Other Features

Arm Opens:	100°
Handle Opens:	56°
Weight:	0.064Kg



## Material

Toggle Clamp:	304 Stainless Steel
Spindle:	304 Stainless Steel
Handle:	uPVC

## What's In The Bag?

GH-101-ASS:	Toggle Clamp
FW-100-SS:	2x Flanged Washers for M5 Spindle
SA-053008-SS:	M5x30mm Stainless Spindle With Nuts



[goodhanduk.co.uk](http://goodhanduk.co.uk)

01908 221 151