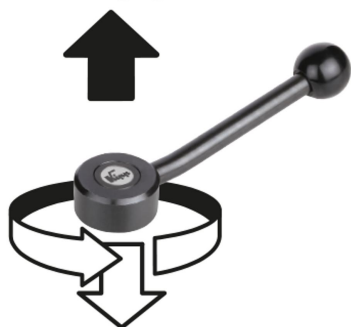


# Tension levers flat internal thread

## Item description/product images



lift to  
disengage



### Description

**Material:**

Steel parts grade 5.8.  
Ball knob black plastic.

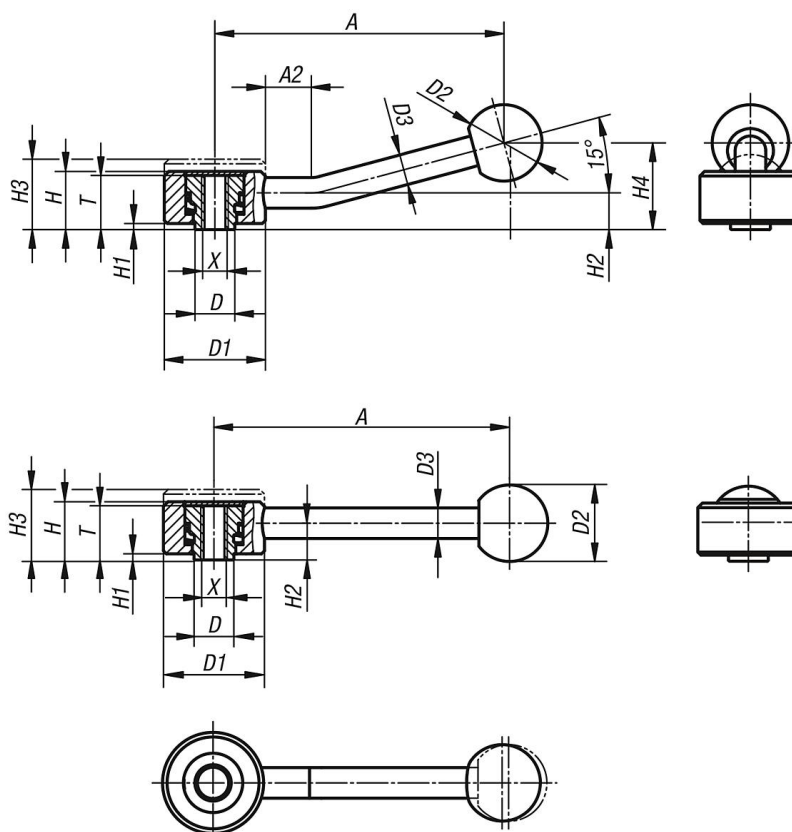
**Version:**

Black oxidised.

**On request:**

Other threads and special versions.  
Dimensions "H1" and "A" available in other lengths at extra charge.

## Drawings



## Tension levers flat internal thread

### Overview of items

#### Tension levers, flat, with internal thread

Order No.	Form	Size	X	T	D	D1	D2	D3	H	H1	H2	H3	H4	A	A2	No. of teeth
K0114.1061	0°	1	M6	18	13,5	33	25	10	19	2	12	23	-	102	-	26
K0114.1081	0°	1	M8	18	13,5	33	25	10	19	2	12	23	-	102	-	26
K0114.2101	0°	2	M10	21	19	41	30	12	22	2	13,5	26	-	131	-	30
K0114.2121	0°	2	M12	21	19	41	30	12	22	2	13,5	26	-	131	-	30
K0114.3121	0°	3	M12	27	23	45	37	14	28	2	17	33	-	148	-	36
K0114.3161	0°	3	M16	27	23	45	37	14	28	2	17	33	-	148	-	36
K0114.1062	15°	1	M6	18	13,5	33	25	10	19	2	12	23	29	100	15	26
K0114.1082	15°	1	M8	18	13,5	33	25	10	19	2	12	23	29	100	15	26
K0114.2102	15°	2	M10	21	19	41	30	12	22	2	13,5	26	38	127	15	30
K0114.2122	15°	2	M12	21	19	41	30	12	22	2	13,5	26	38	127	15	30
K0114.3122	15°	3	M12	27	23	45	37	14	28	2	17	33	48	145	15	36
K0114.3162	15°	3	M16	27	23	45	37	14	28	2	17	33	48	145	15	36