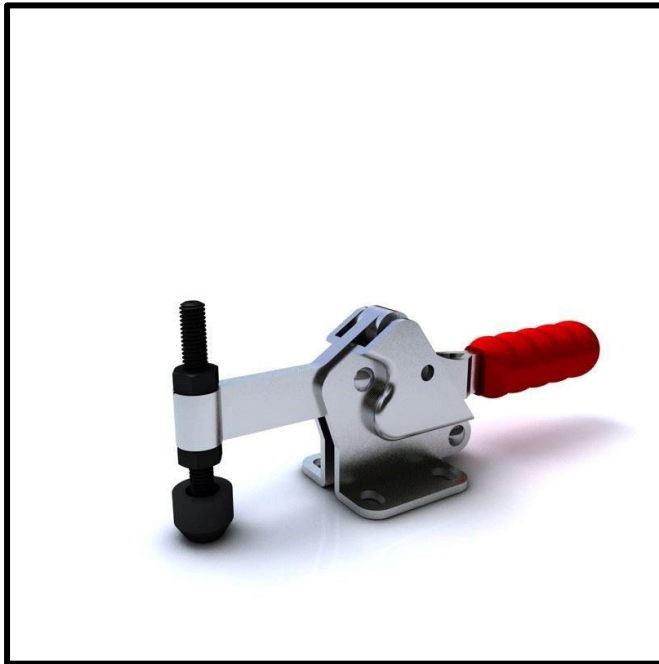


# Horizontal Toggle Clamp

Part No. GH-21502-C



## Product Description

Horizontal Toggle Clamp Flat  
Base Fixed Arm Size 150daN

## Key Features

Overall Height:	39mm
Underarm Height:	25mm
Arm Length	43.7mm
Holding Force	150daN

## Other Features

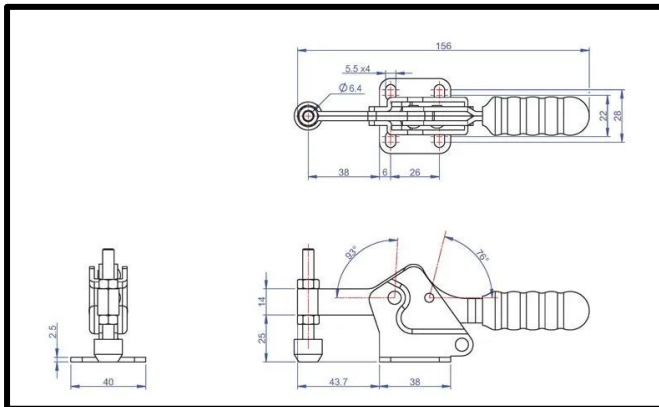
Arm Opens:	93°
Handle Opens:	76°
Weight:	0.24Kg

## Material

Toggle Clamp:	Zinc Plated Mild Steel
Spindle:	Zinc Plated Mild Steel
Handle:	uPVC
Cap:	Neoprene

## Whats In The Bag?

Toggle Clamp:	GH-21502-C
Spindle:	SA-065010
Neoprene Cap:	NC-06



[goodhanduk.co.uk](http://goodhanduk.co.uk)

01908 221 151