

Vertical Toggle Clamp

Part No. GH-13003-A



Product Description

Vertical Toggle Clamp Side Base
Solid Arm Size 300Kg

Key Features

Overall Height: 240mm
Underarm Height: 82mm
Arm Length: 93cm
Holding Force: 300Kg

Other Features

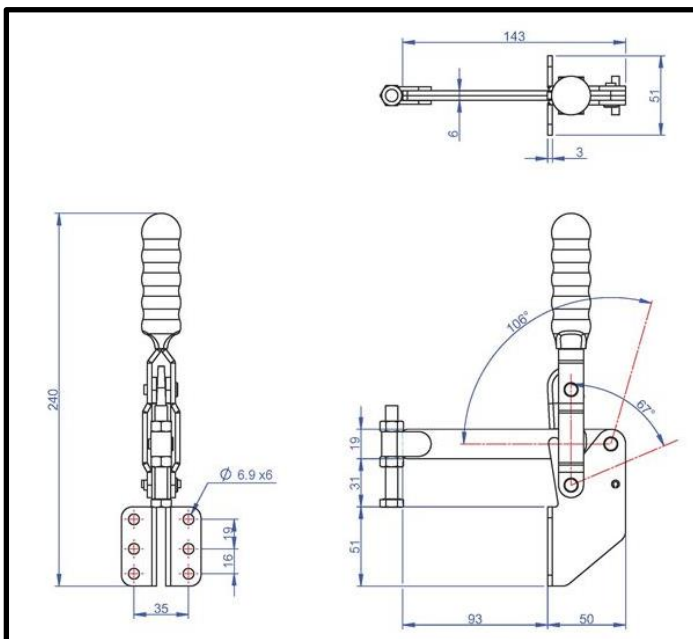
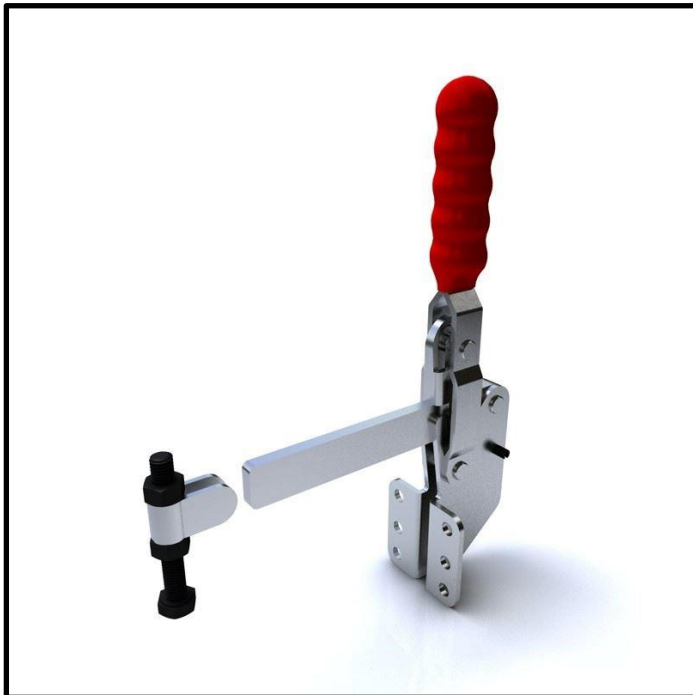
Arm Opens: 106°
Handle Opens: 67°
Weight: 0.61Kg

Material

Clamp: Zinc Plated Mild Steel
Spindle: Zinc Plated Mild Steel
Handle: uPVC

What's In The Bag?

GH-13003-A: Toggle Clamp
SA-086012: M8x60mm Zinc Plated Steel
Spindle With Nuts
BR-516: Bolt Retainer For M8 Spindle



goodhanduk.co.uk

01908 221 151