

Levelling feet ECO threaded spindles steel or stainless steel

Item description/product images



Description

Material:

Steel or 1.4305 stainless steel

Version:

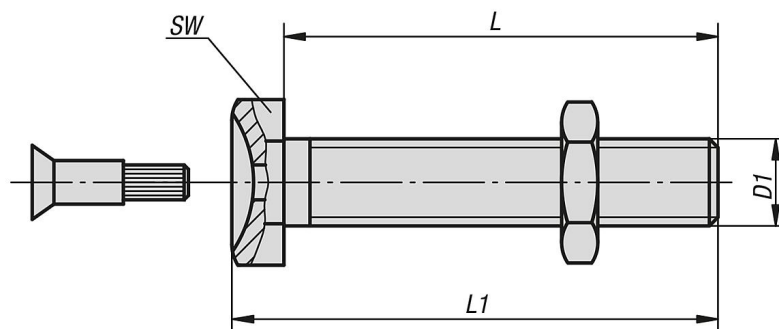
Steel trivalent blue passivated.

Stainless steel, bright.

Note:

ECO levelling feet consist of a threaded spindle and a plate. Any threaded spindle can be combined with any plate.

Drawings



Overview of items

Levelling feet ECO threaded spindles steel or stainless steel

Order No.	Main material	D1	L	L1	SW	Load rating max. kN
K0429.080251	steel	M8	25	29,5	13	3,5
K0429.080401	steel	M8	40	44,5	13	3,5
K0429.080501	steel	M8	50	54,5	13	3,5
K0429.080701	steel	M8	70	74,5	13	3,5
K0429.080801	steel	M8	80	84,5	13	3,5
K0429.081001	steel	M8	100	104,5	13	3,5
K0429.081201	steel	M8	120	124,5	13	3,5
K0429.100251	steel	M10	25	30	17	4,7
K0429.100401	steel	M10	40	45	17	4,7
K0429.100501	steel	M10	50	55	17	4,7
K0429.100701	steel	M10	70	75	17	4,7
K0429.100801	steel	M10	80	85	17	4,7
K0429.101001	steel	M10	100	105	17	4,7
K0429.101201	steel	M10	120	125	17	4,7
K0429.120251	steel	M12	25	31	19	7,7
K0429.120401	steel	M12	40	46	19	7,7
K0429.120501	steel	M12	50	56	19	7,7
K0429.120701	steel	M12	70	76	19	7,7
K0429.120801	steel	M12	80	86	19	7,7
K0429.121001	steel	M12	100	106	19	7,7

Levelling feet ECO threaded spindles steel or stainless steel

Overview of items

Order No.	Main material	D1	L	L1	SW	Load rating max. kN
K0429.121201	steel	M12	120	126	19	7,7
K0429.160501	steel	M16	50	58,5	24	14,5
K0429.161001	steel	M16	100	108,5	24	14,5
K0429.161501	steel	M16	150	158,5	24	14,5
K0429.080252	stainless steel	M8	25	29,5	13	3,5
K0429.080402	stainless steel	M8	40	44,5	13	3,5
K0429.080502	stainless steel	M8	50	54,5	13	3,5
K0429.080702	stainless steel	M8	70	74,5	13	3,5
K0429.080802	stainless steel	M8	80	84,5	13	3,5
K0429.081002	stainless steel	M8	100	104,5	13	3,5
K0429.081202	stainless steel	M8	120	124,5	13	3,5
K0429.100252	stainless steel	M10	25	30	17	4,7
K0429.100402	stainless steel	M10	40	45	17	4,7
K0429.100502	stainless steel	M10	50	55	17	4,7
K0429.100702	stainless steel	M10	70	75	17	4,7
K0429.100802	stainless steel	M10	80	85	17	4,7
K0429.101002	stainless steel	M10	100	105	17	4,7
K0429.101202	stainless steel	M10	120	125	17	4,7
K0429.120252	stainless steel	M12	25	31	19	7,7
K0429.120402	stainless steel	M12	40	46	19	7,7
K0429.120502	stainless steel	M12	50	56	19	7,7
K0429.120702	stainless steel	M12	70	76	19	7,7
K0429.120802	stainless steel	M12	80	86	19	7,7
K0429.121002	stainless steel	M12	100	106	19	7,7
K0429.121202	stainless steel	M12	120	126	19	7,7
K0429.160502	stainless steel	M16	50	58,5	24	14,5
K0429.161002	stainless steel	M16	100	108,5	24	14,5
K0429.161502	stainless steel	M16	150	158,5	24	14,5